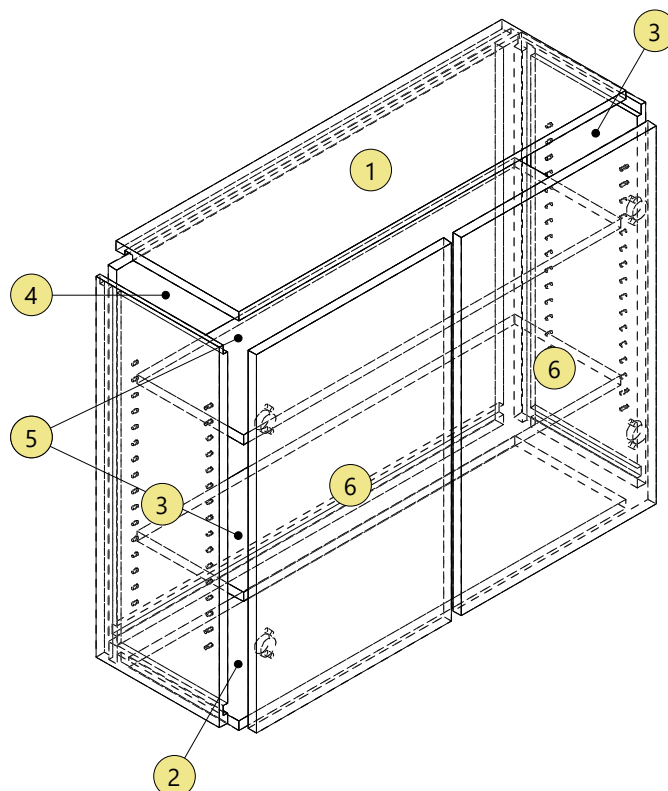
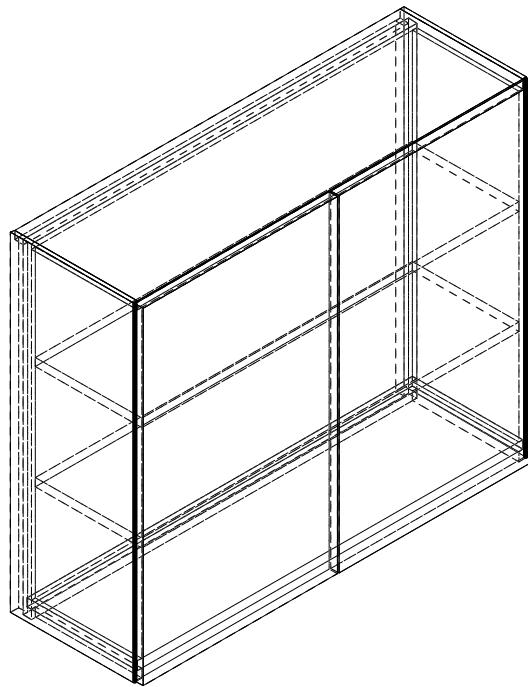


Height	762.0 mm
Width	914.4 mm
Depth	304.8 mm
Height (Upper Strip)	0.0 mm
Elevation (Plinth)	0.0 mm



## Michael Gregus

### Cutting List (Overall Dimensions) generic 0190, 19.0

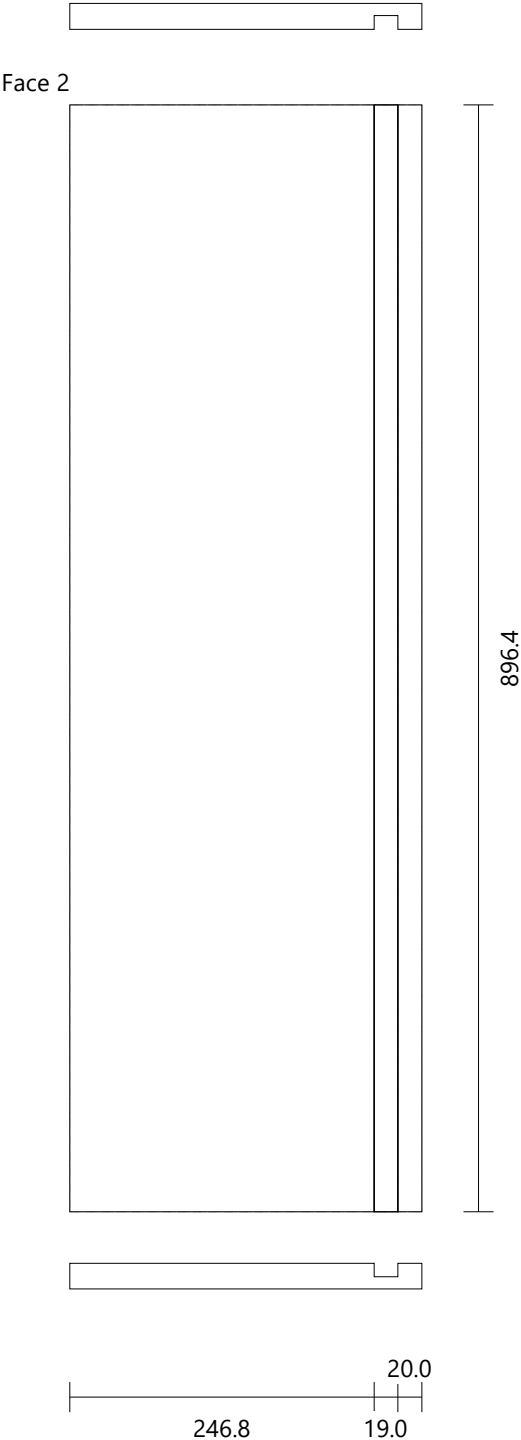
Num	Reference	Height	Width	Quantity	Grain	Left Edge	Right Edge	Bottom Edge	Top Edge
1	Top	896.4	285.8	1	No				
2	Bottom	896.4	256.8	1	No				
3	[Left, Right] Side	762.0	285.8	2	No				
4	Back	753.0	896.4	1	No				
5	Mobile Shelve	876.4	246.8	2	No				
6	Door 1/bin/1.5-3 (dou...	757.0	452.7	2	No				

### Recapitulatory

Panel	Surface	Price (€/sq ft)	Price
generic 0190, 19.0	29.22 sq ft	7.43	217,19 €
<b>Total</b>			<b>217,19 €</b>
<b>Supply</b>			
Fittings	Quantity	Unit Price	Price
Blum/hing71B369-X00//s-app/ol/4.5-8.5	4	2.52	10,08 €
<b>Total</b>			<b>10,08 €</b>
<b>Tooling</b>			
Fittings	Quantity	Unit Price	Price
Blum/hing71B369-X00//s-app/ol/4.5-8.5	4	3.35	13,40 €
<b>Total</b>			<b>13,40 €</b>
<b>Overall Total</b>			<b>240,67 €</b>

Michael Gregus

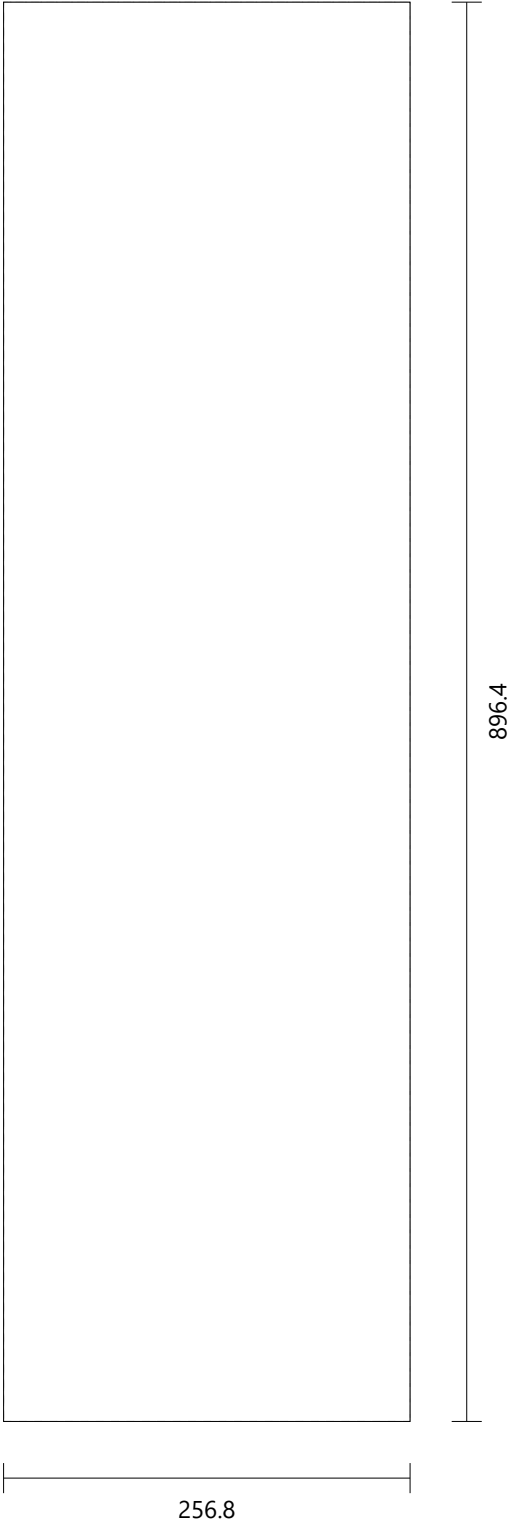
Top generic 0190 Height: 896.4 Width: 285.8 Thickness: 19.0 Quantity: 1  
Groove Vertical Face 2 X Position: 256.3 Y Position: 0.0 Width: 19.0 Length: 896.4 Depth: 10.0



Michael Gregus

Bottom                  generic 0190                  Height: 896.4                  Width: 256.8                  Thickness: 19.0                  Quantity: 1

Face 1

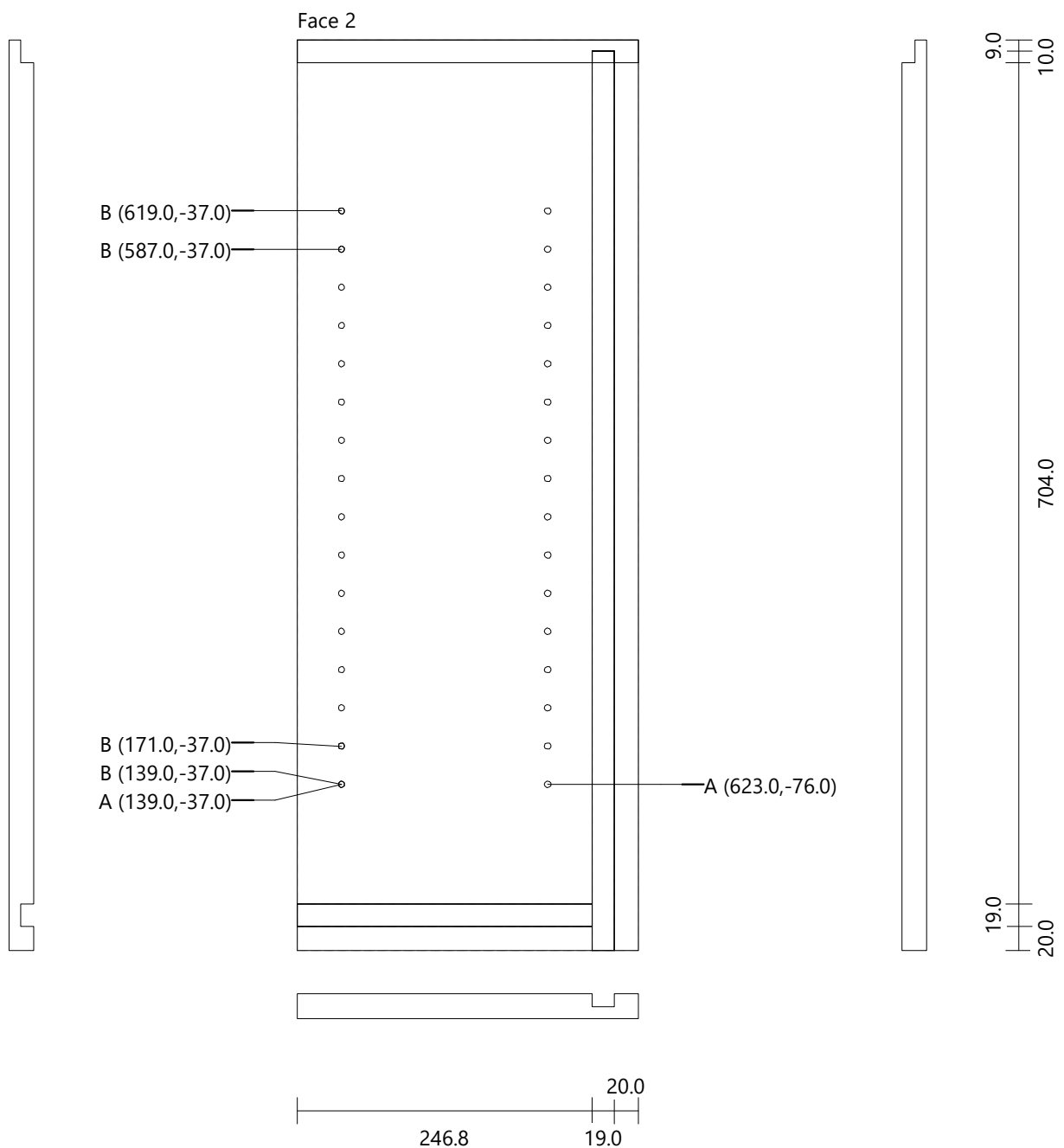


# Michael Gregus

Left Side generic 0190 Height: 762.0 Width: 285.8 Thickness: 19.0 Quantity: 1

Regular Drillings A (32) Diameter: 5.0 Depth: 11.0  
Drilling B (4) Diameter: 5.0 Depth: 15.0

Groove Horizontal	Face 2	X Position: 0.0	Y Position: 752.5	Width: 19.0	Length: 285.8	Depth: 10.0
Groove Vertical	Face 2	X Position: 256.3	Y Position: 0.0	Width: 19.0	Length: 753.0	Depth: 10.0
Groove Horizontal	Face 2	X Position: 0.0	Y Position: 29.5	Width: 19.0	Length: 246.8	Depth: 10.0

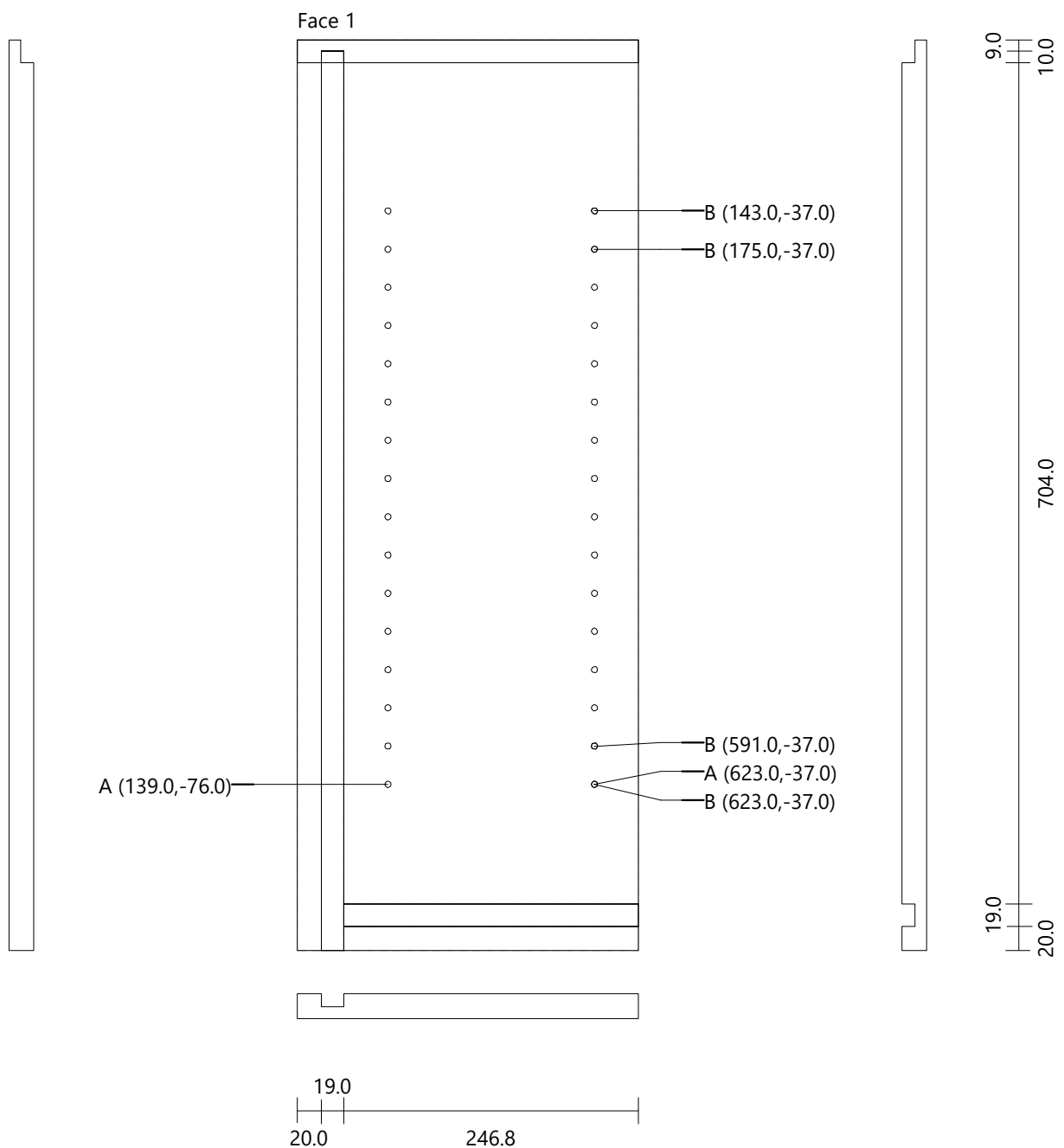


# Michael Gregus

Right Side      generic 0190      Height: 762.0      Width: 285.8      Thickness: 19.0      Quantity: 1

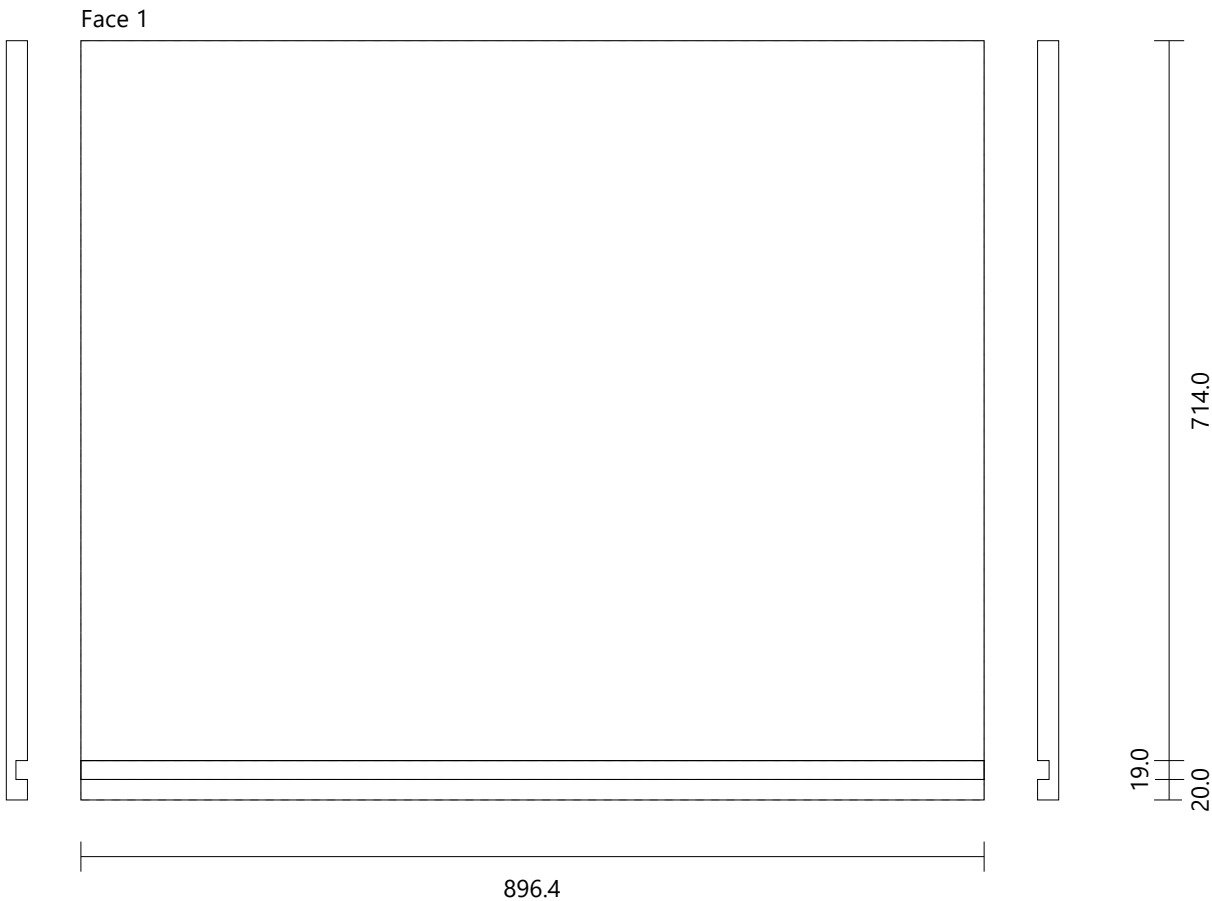
Regular Drillings    A (32)    Diameter: 5.0    Depth: 11.0  
Drilling                B (4)    Diameter: 5.0    Depth: 15.0

Groove Horizontal	Face 1	X Position: 0.0	Y Position: 9.5	Width: 19.0	Length: 285.8	Depth: 10.0
Groove Vertical	Face 1	X Position: 29.5	Y Position: 9.0	Width: 19.0	Length: 753.0	Depth: 10.0
Groove Horizontal	Face 1	X Position: 39.0	Y Position: 732.5	Width: 19.0	Length: 246.8	Depth: 10.0



Michael Gregus

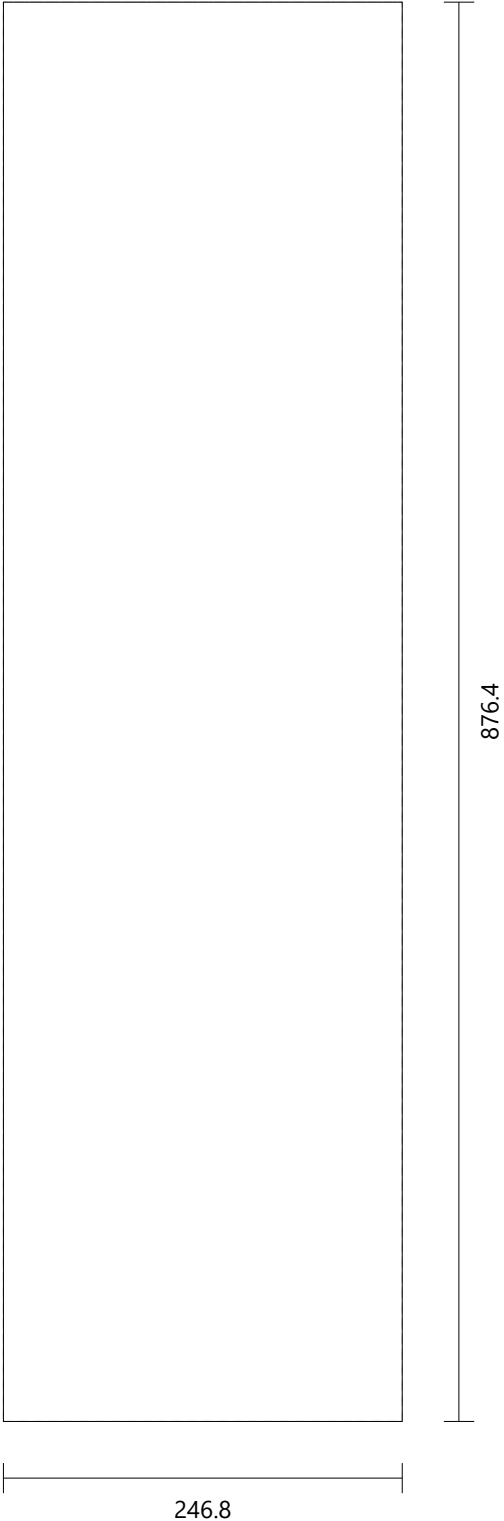
Back generic 0190 Height: 753.0 Width: 896.4 Thickness: 19.0 Quantity: 1  
Groove Horizontal Face 1 X Position: 0.0 Y Position: 723.5 Width: 19.0 Length: 896.4 Depth: 10.0



Michael Gregus

Mobile Shelve      generic 0190      Height: 876.4      Width: 246.8      Thickness: 19.0      Quantity: 2

Face 1



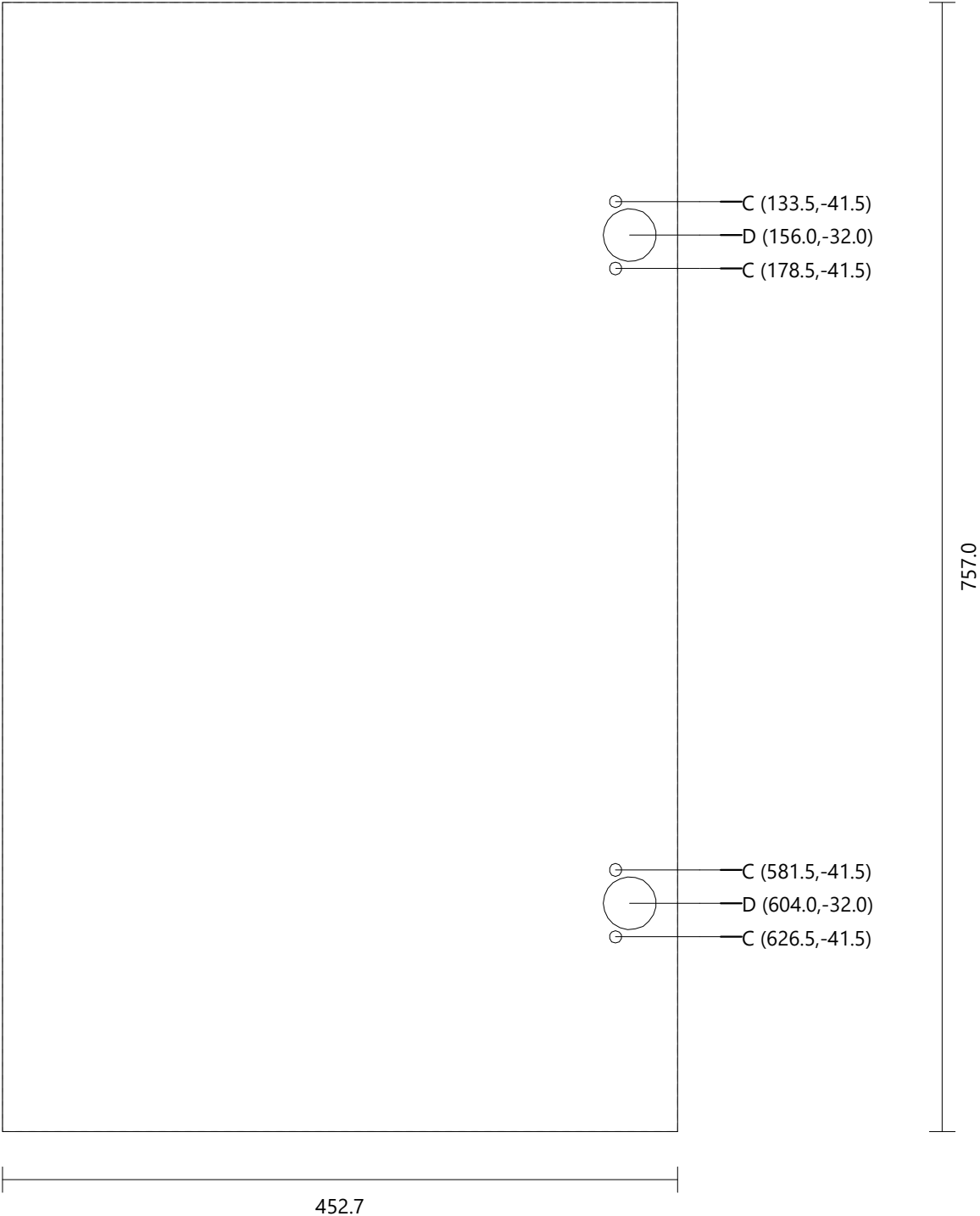


Michael Gregus

Door 1/bin/1.5-3 (double)\_1    generic 0190    Height: 757.0    Width: 452.7    Thickness: 19.0    Quantity: 1

Drilling    C (4)    Diameter: 8.0    Depth: 13.0  
             D (2)    Diameter: 35.0    Depth: 14.0

Face 2



Michael Gregus

Door 1/bin/1.5-3 (double)_2	generic 0190	Height: 757.0	Width: 452.7	Thickness: 19.0	Quantity: 1
Drilling	C (4)	Diameter: 8.0	Depth: 13.0		
	D (2)	Diameter: 35.0	Depth: 14.0		

