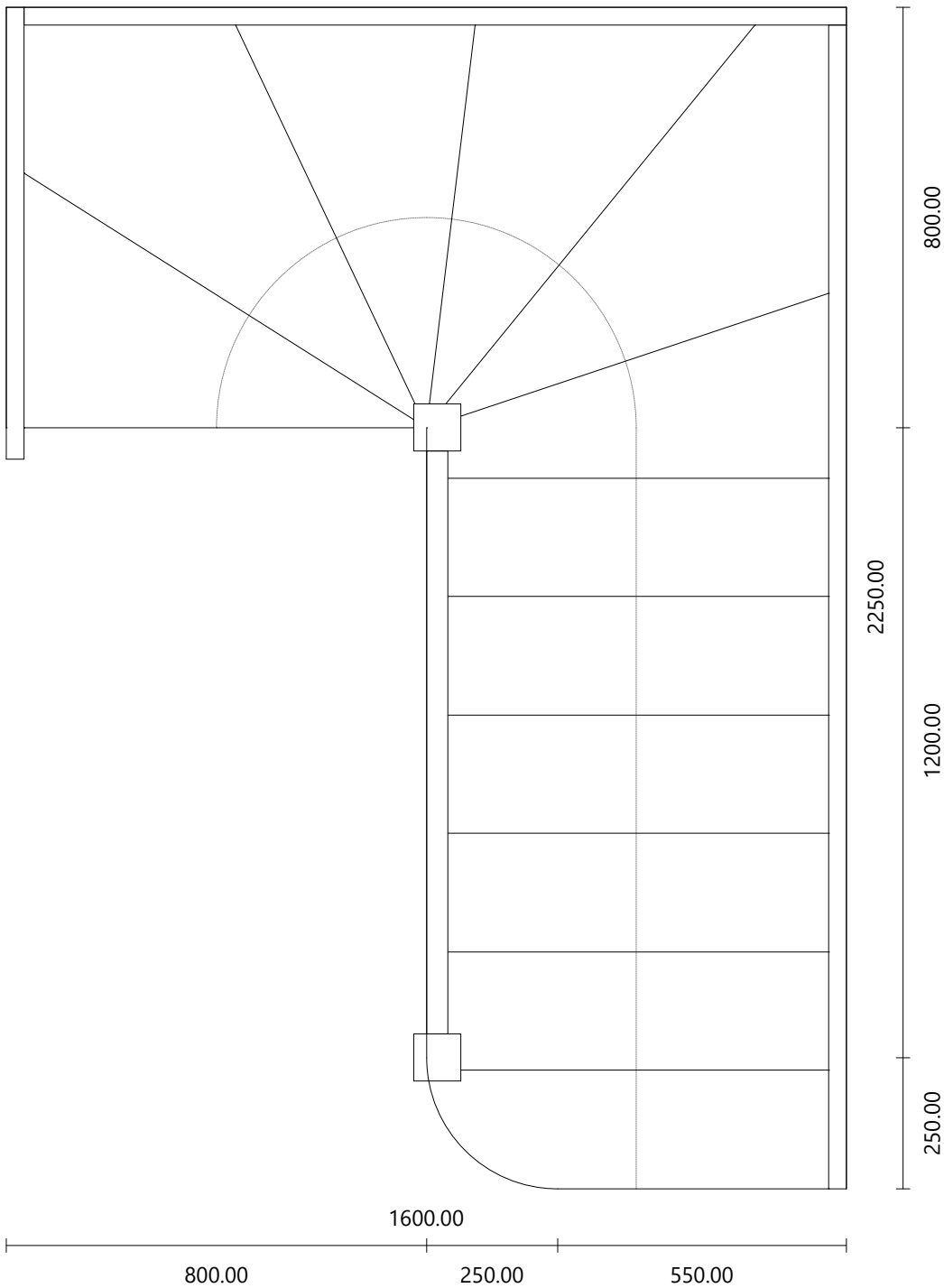


Multi-Flight Stair		Riser Height	210.38 mm
Risers	13	Tread Width	225.55 mm
Floor Height	2735.00 mm	Stair Rule	646.32 mm

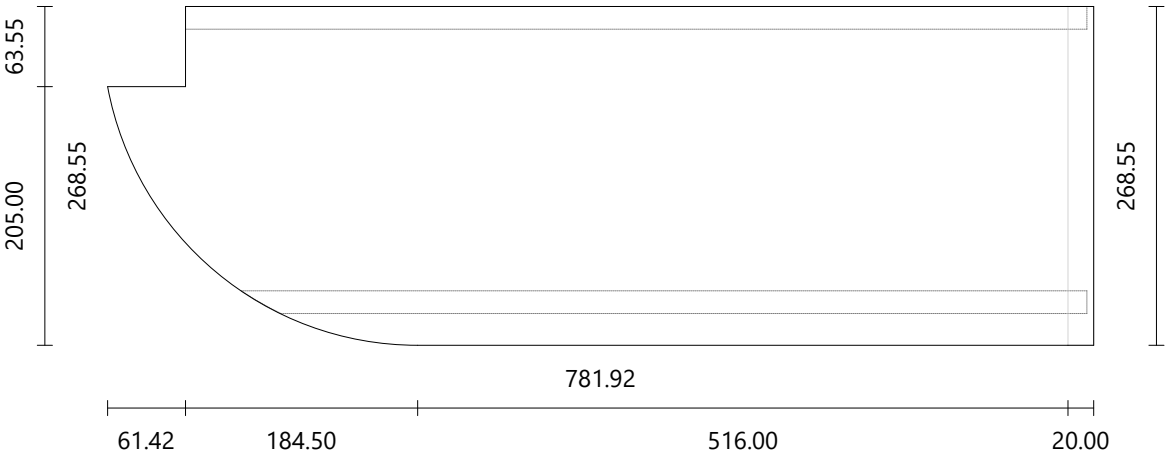


Step

Material MDF
Dimensions 781.92 × 268.55 mm
Thickness 25.00 mm

Riser

Material MDF
Dimensions 671.18 × 195.38 mm
Thickness 18.00 mm
Angle Left: 60.03° | Right: 0°

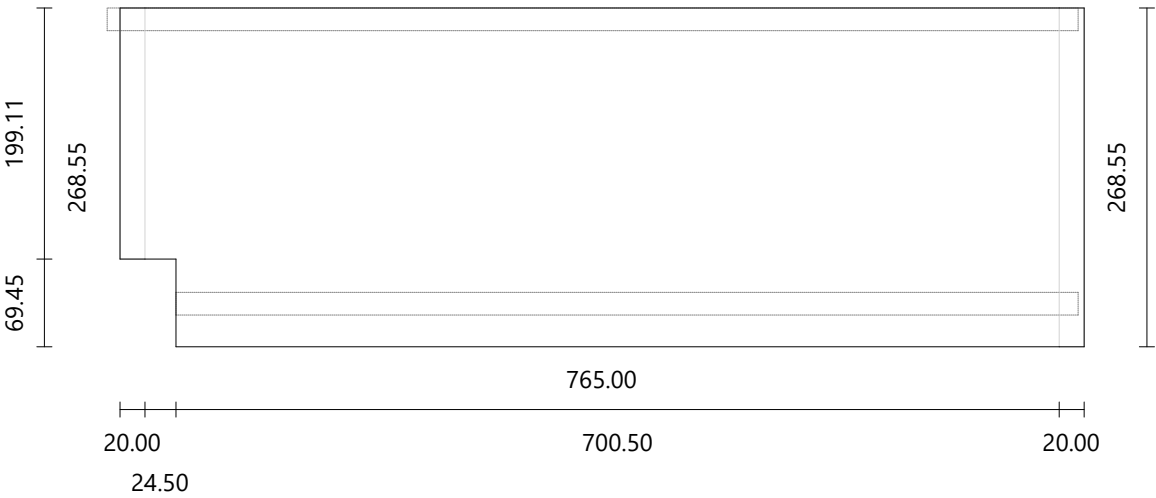


Step

Material MDF
Dimensions 765.00 × 268.55 mm
Thickness 25.00 mm

Riser

Material MDF
Dimensions 715.50 × 205.38 mm
Thickness 18.00 mm
Angle 0°

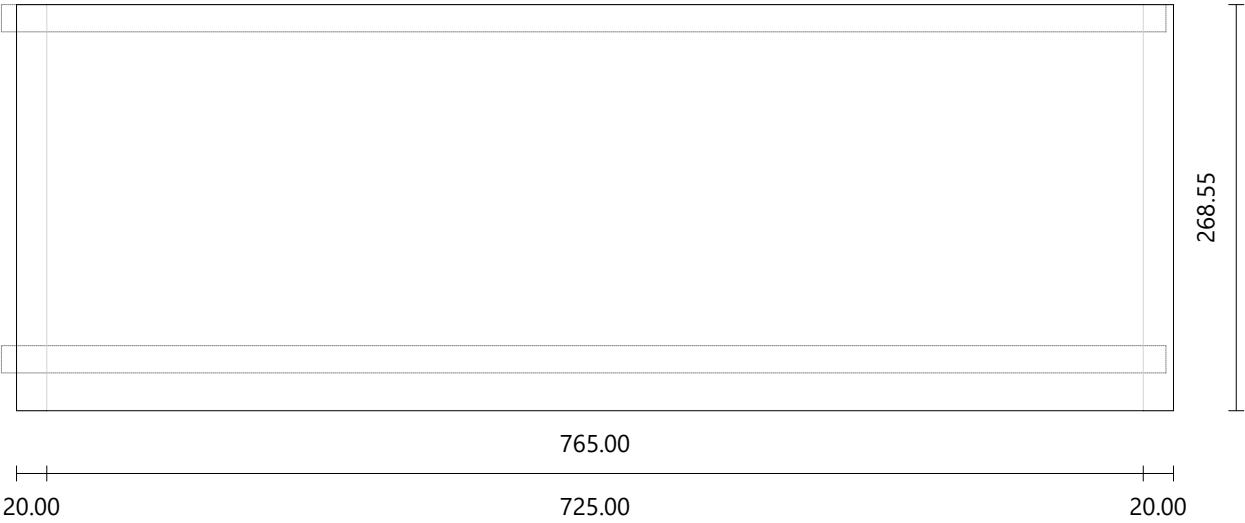


Step

Material MDF
Dimensions 765.00 × 268.55 mm
Thickness 25.00 mm

Riser

Material MDF
Dimensions 770.00 × 205.38 mm
Thickness 18.00 mm
Angle 0°

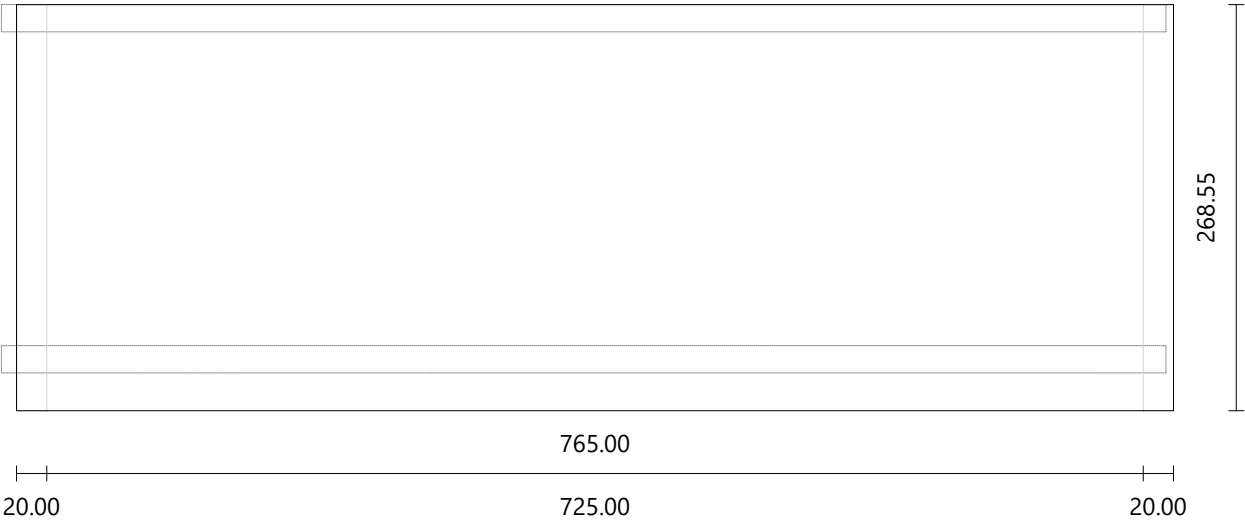


Step

Material MDF
Dimensions 765.00 × 268.55 mm
Thickness 25.00 mm

Riser

Material MDF
Dimensions 770.00 × 205.38 mm
Thickness 18.00 mm
Angle 0°

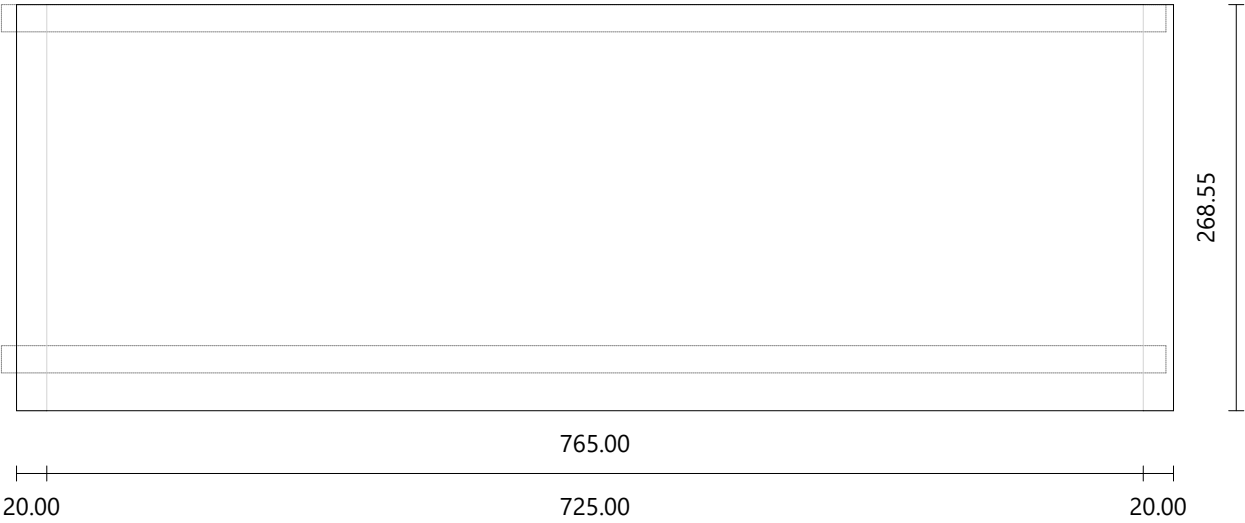


Step

Material MDF
Dimensions 765.00 × 268.55 mm
Thickness 25.00 mm

Riser

Material MDF
Dimensions 770.00 × 205.38 mm
Thickness 18.00 mm
Angle 0°

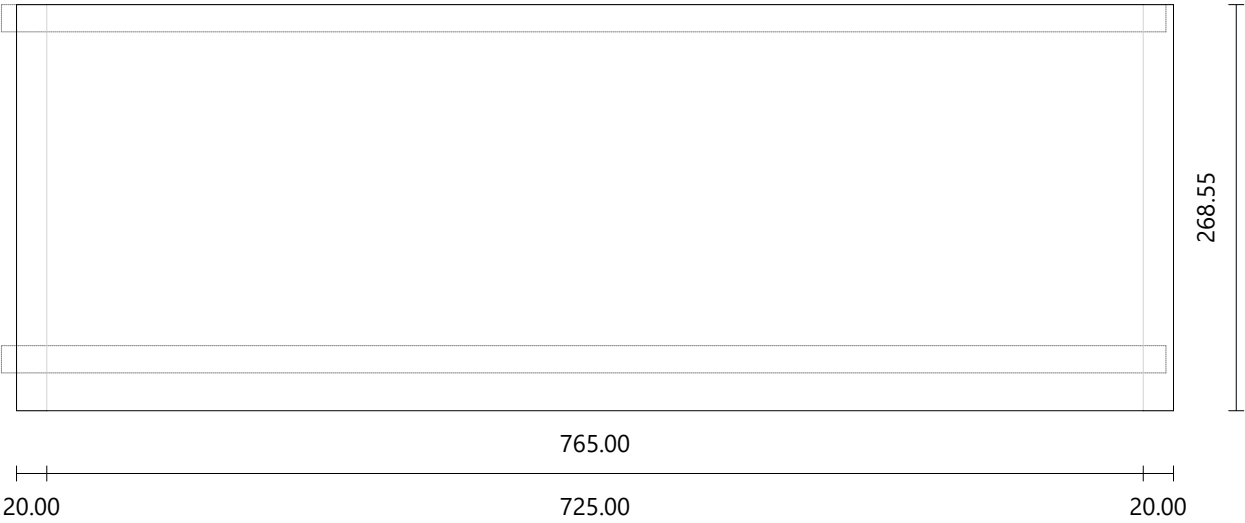


Step

Material MDF
Dimensions 765.00 × 268.55 mm
Thickness 25.00 mm

Riser

Material MDF
Dimensions 770.00 × 205.38 mm
Thickness 18.00 mm
Angle 0°

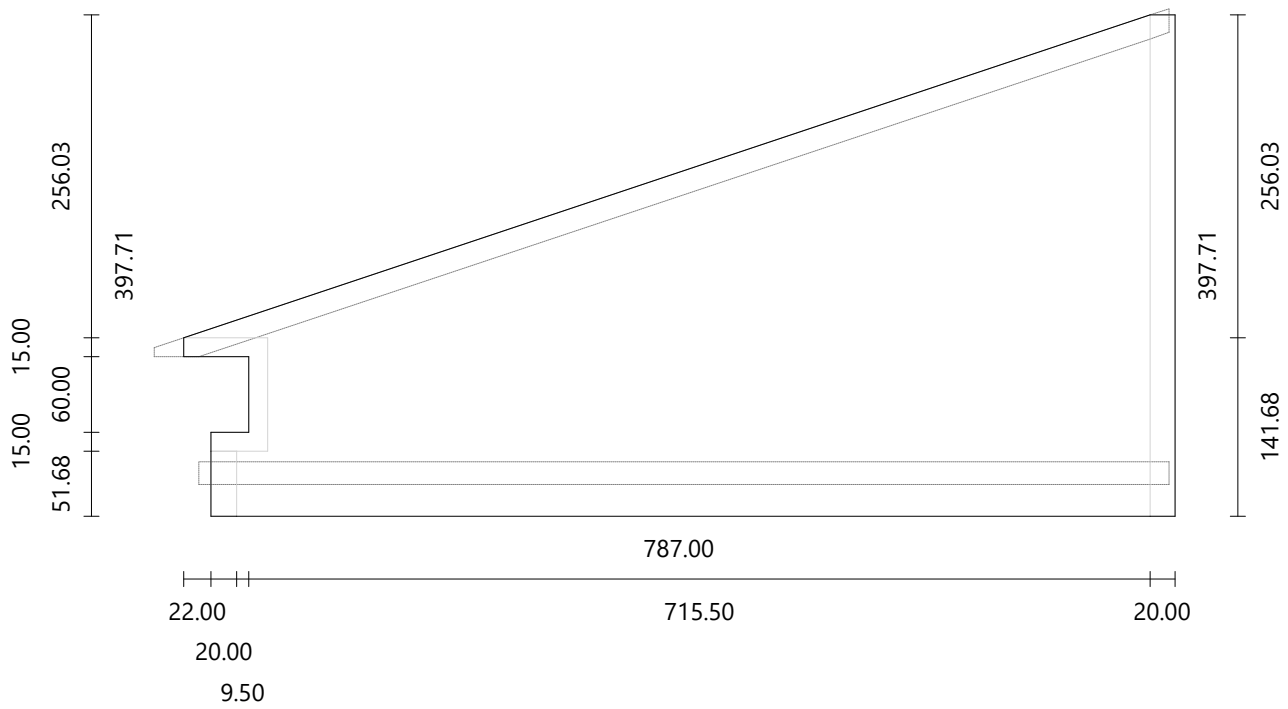


Step

Material MDF
Dimensions 787.00 × 397.71 mm
Thickness 25.00 mm

Riser

Material MDF
Dimensions 770.00 × 205.38 mm
Thickness 18.00 mm
Angle 0°

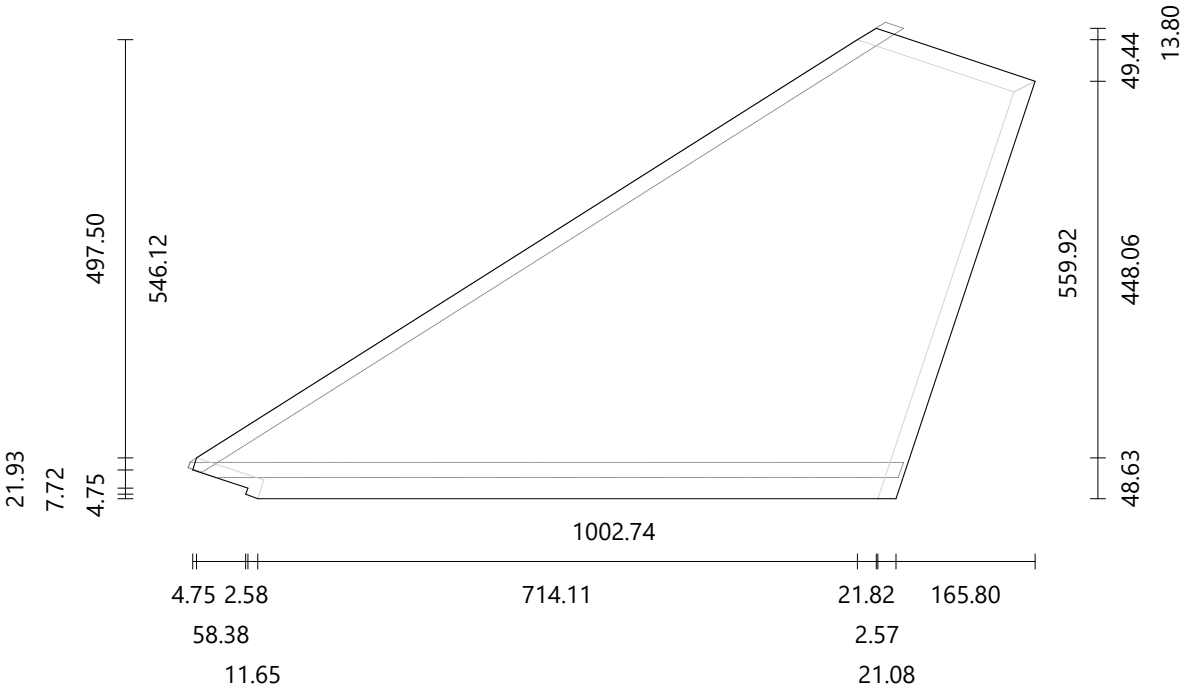


Step

Material MDF
Dimensions 1002.74 × 559.92 mm
Thickness 25.00 mm

Riser

Material MDF
Dimensions 851.46 × 205.38 mm
Thickness 18.00 mm
Angle Right: -18.46°

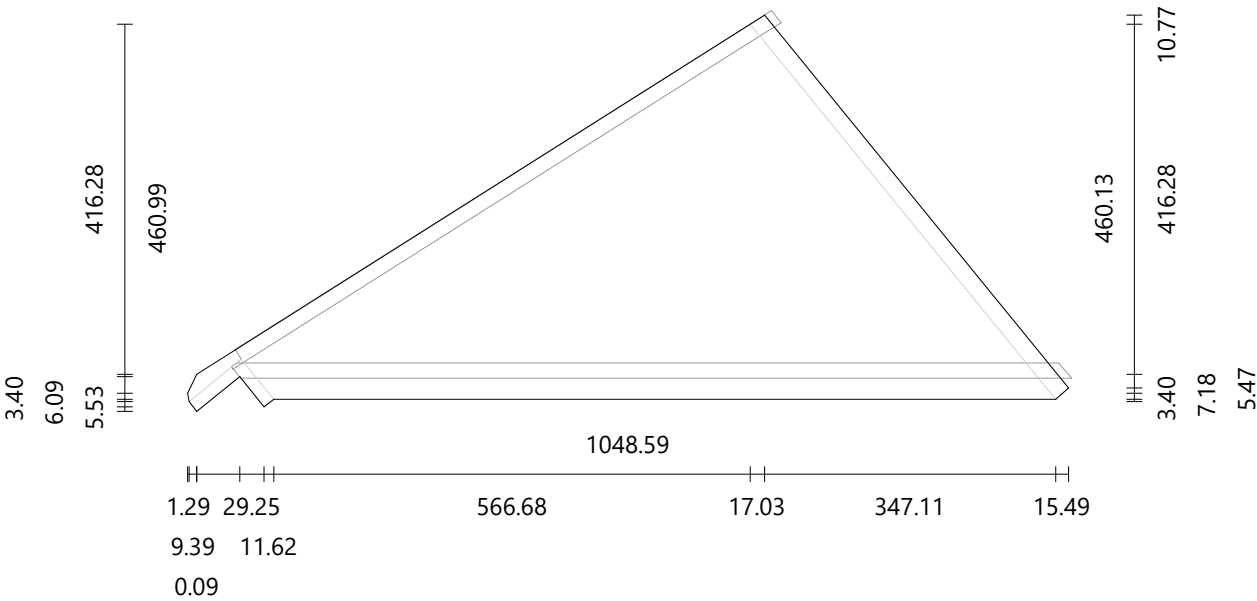


Step

Material MDF
Dimensions 1048.59 × 471.75 mm
Thickness 25.00 mm

Riser

Material MDF
Dimensions 999.49 × 205.38 mm
Thickness 18.00 mm
Angle Right: 39.23°

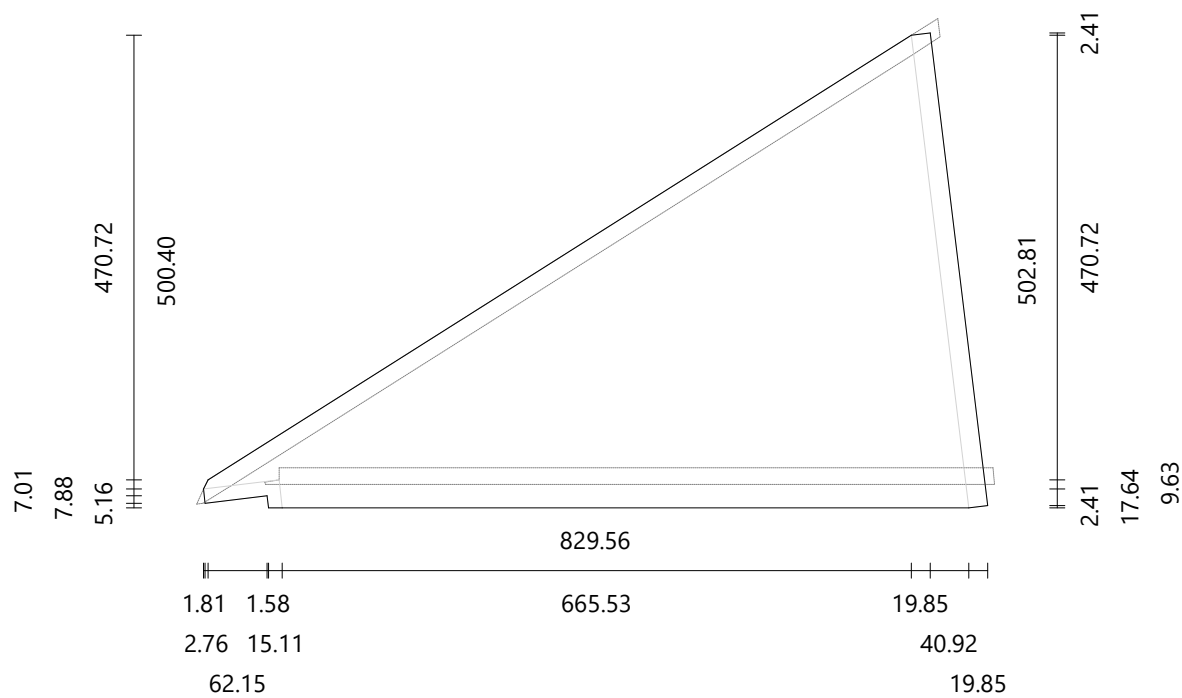


Step

Material MDF
Dimensions 829.56 × 502.81 mm
Thickness 25.00 mm

Riser

Material MDF
Dimensions 771.98 × 205.38 mm
Thickness 18.00 mm
Angle Right: 6.92°

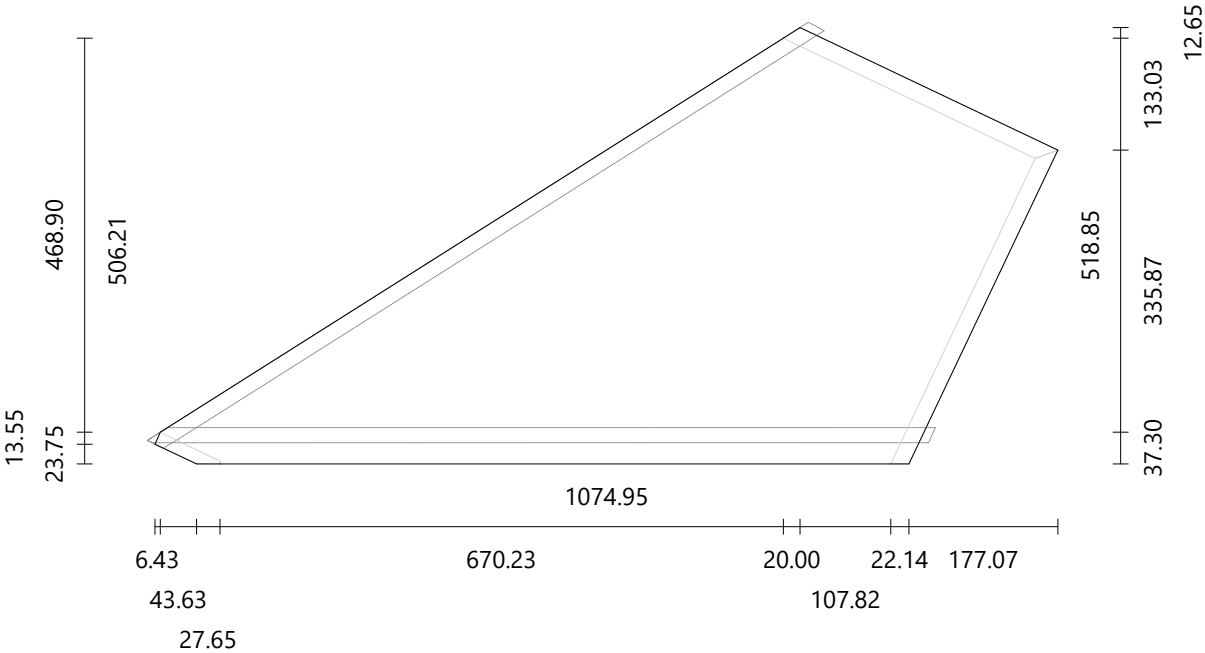


Step

Material MDF
Dimensions 1074.95 × 518.85 mm
Thickness 25.00 mm

Riser

Material MDF
Dimensions 942.33 × 205.38 mm
Thickness 18.00 mm
Angle Right: -25.38°

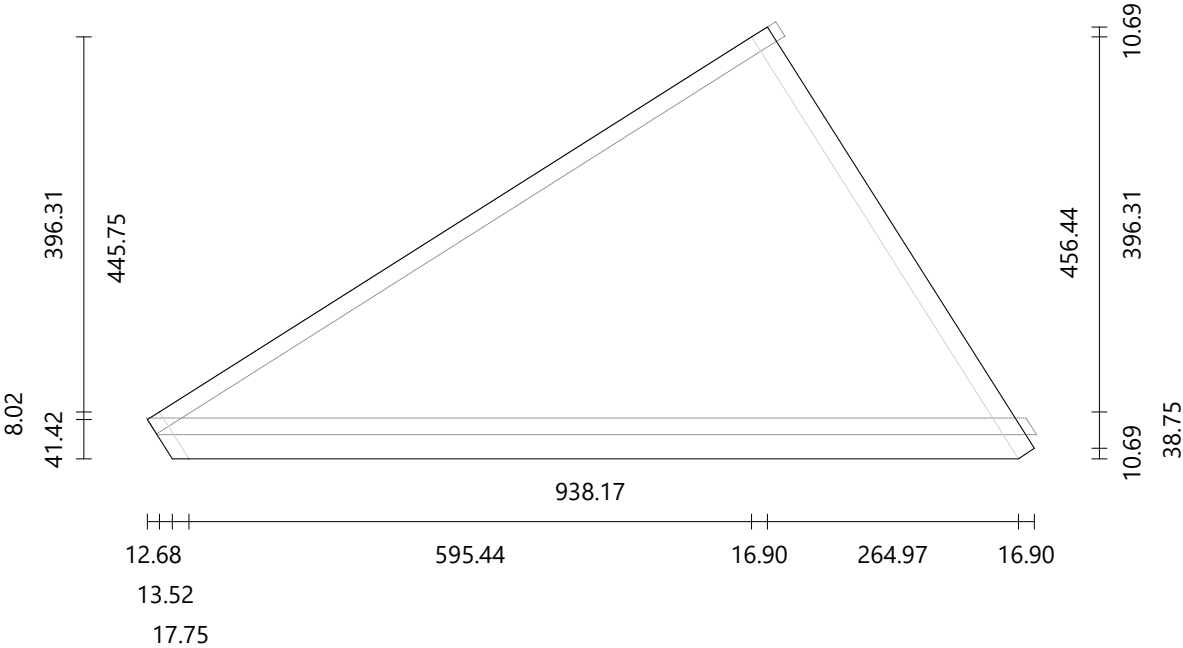


Step

Material MDF
Dimensions 938.17 × 456.44 mm
Thickness 25.00 mm

Riser

Material MDF
Dimensions 941.95 × 205.38 mm
Thickness 18.00 mm
Angle 32.31°

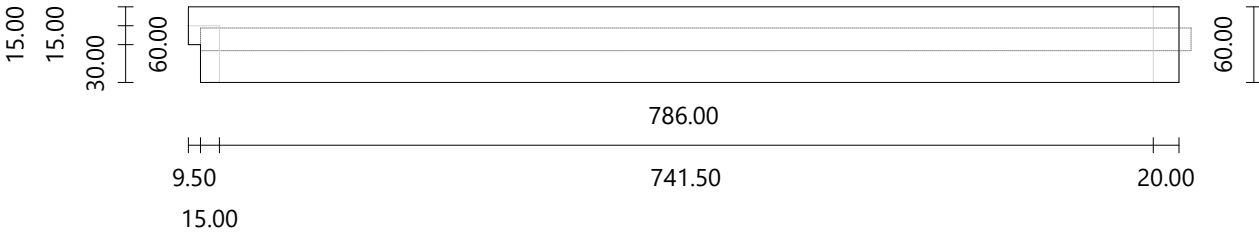


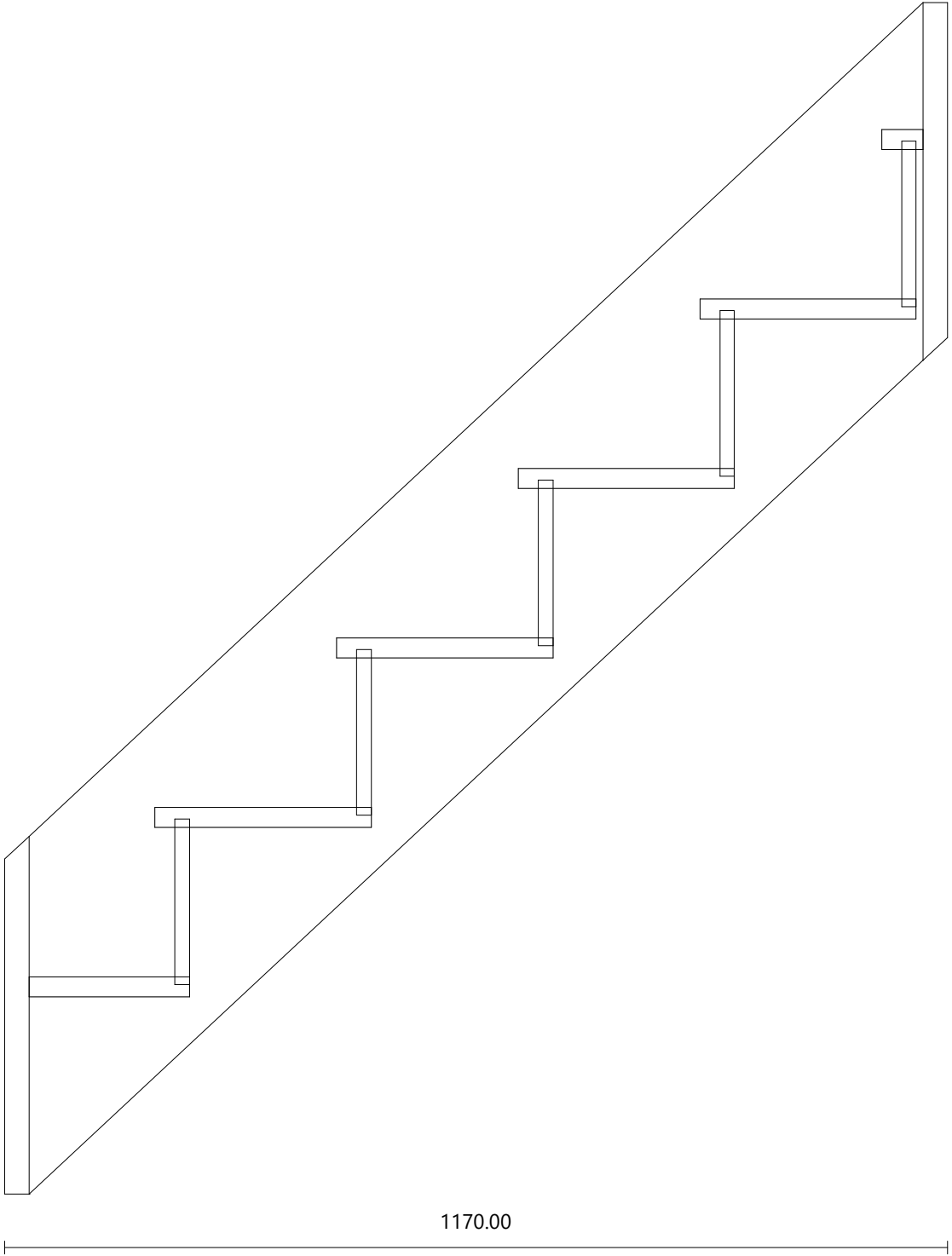
Step

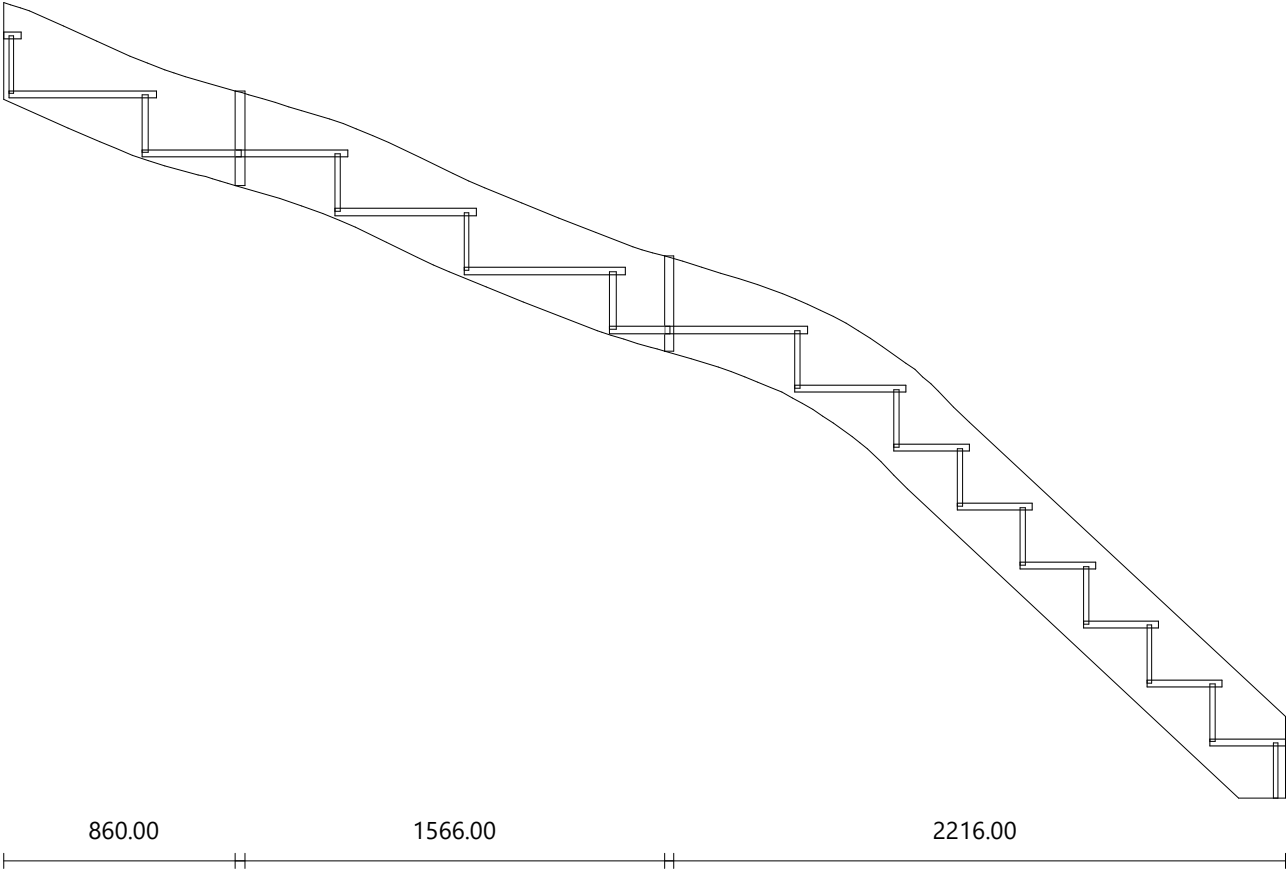
Material MDF
Dimensions 786.00 × 60.00 mm
Thickness 25.00 mm

Riser

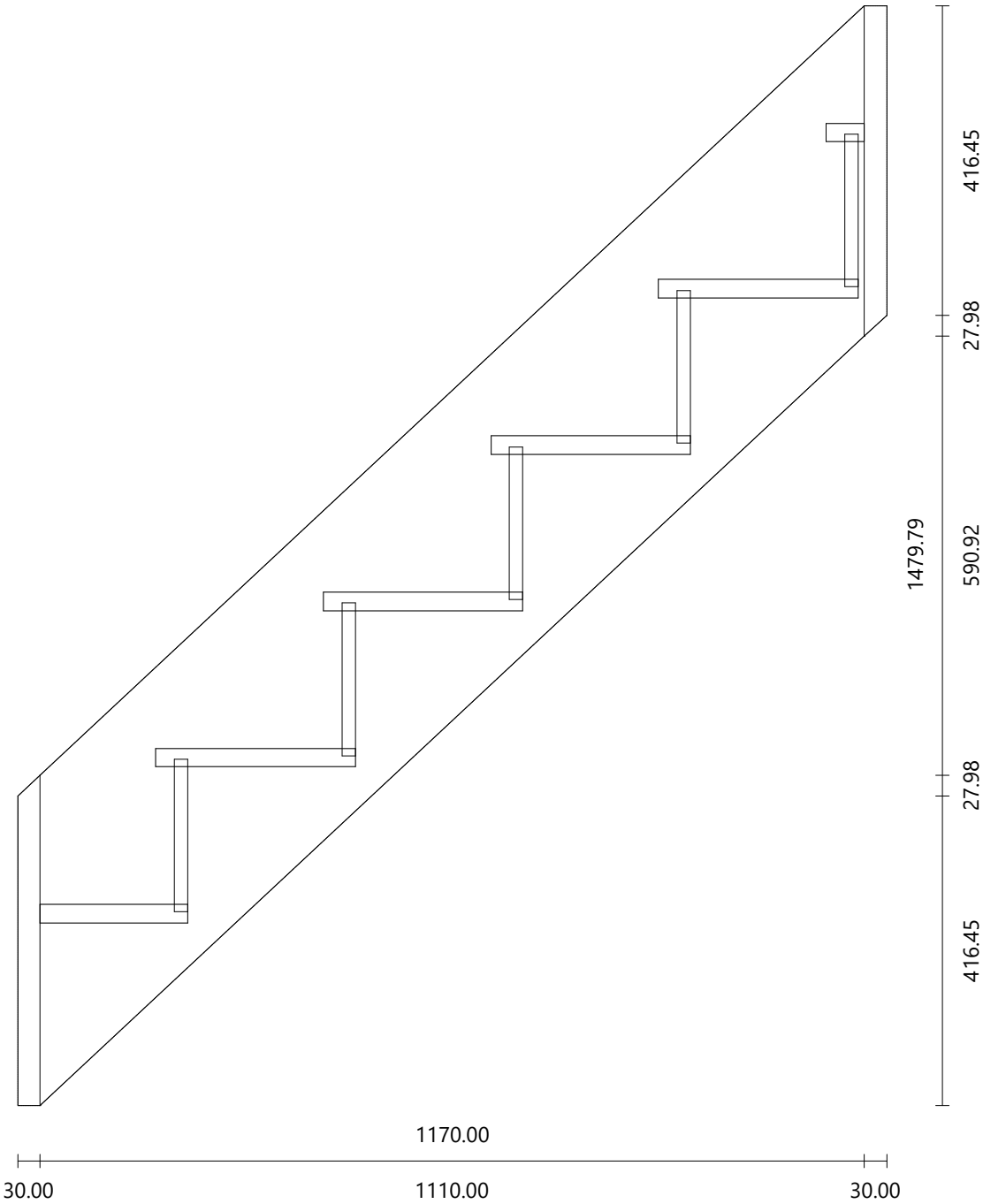
Material MDF
Dimensions 786.50 × 205.38 mm
Thickness 18.00 mm
Angle 0°



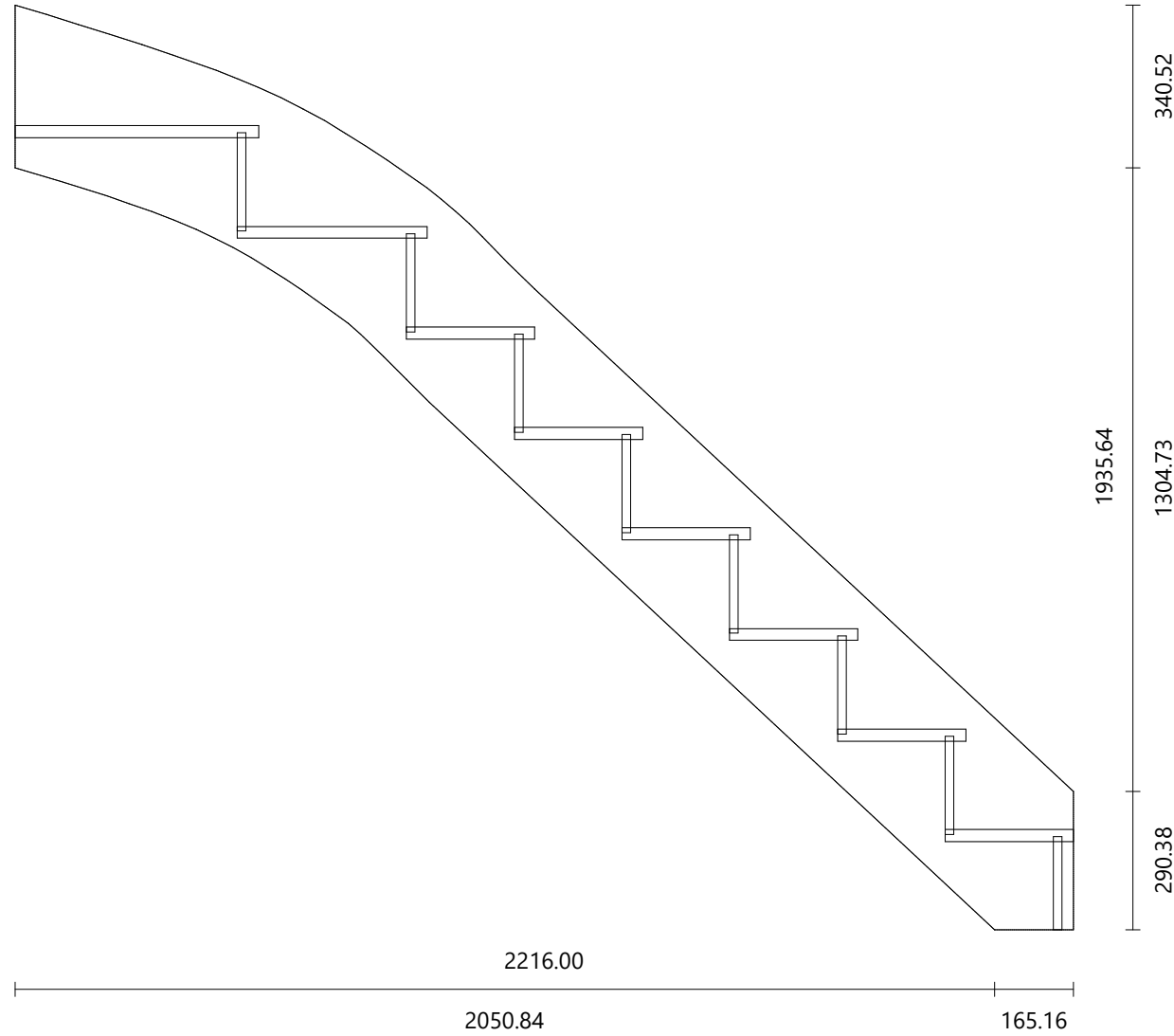




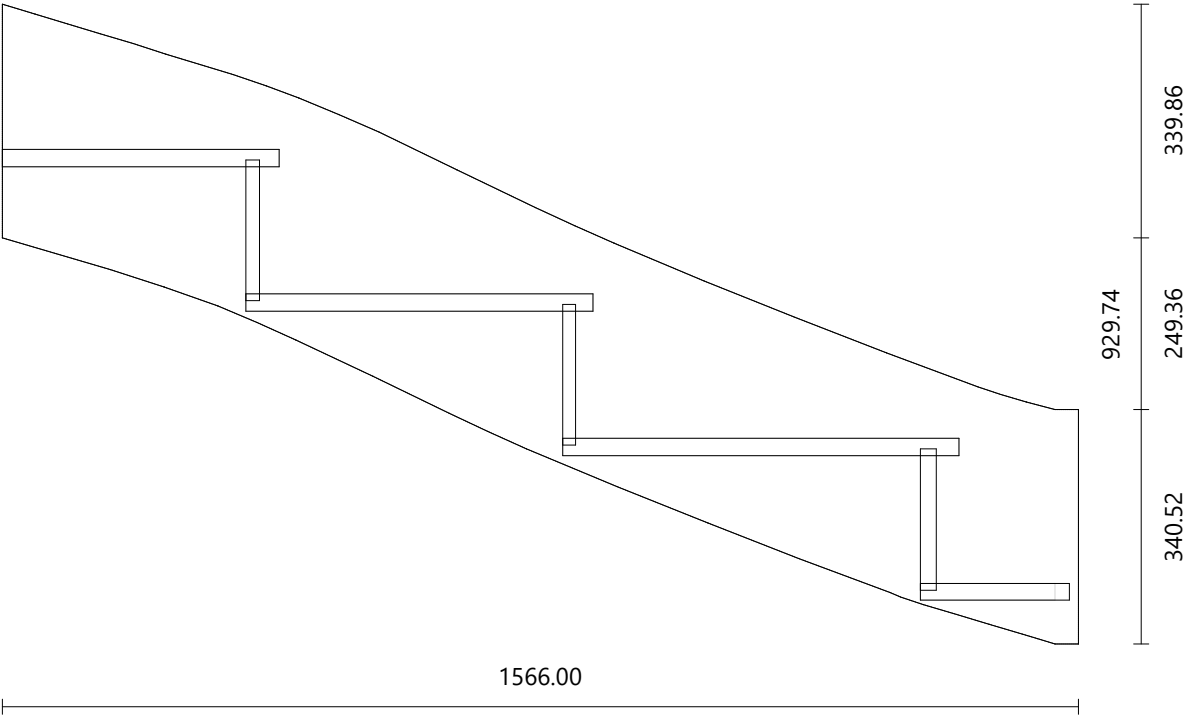
Material pine
Dimensions 1864.93 × 325.00 mm
Thickness 41.00 mm



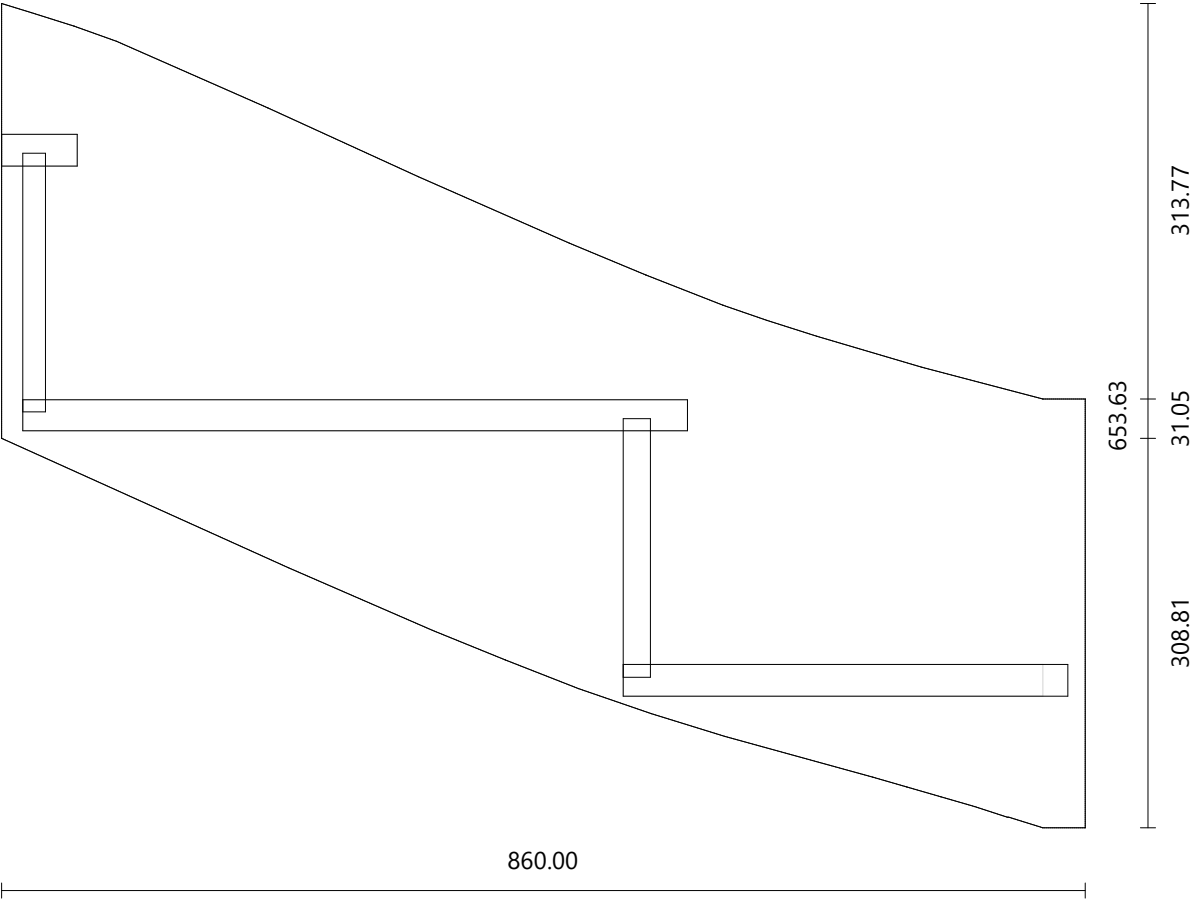
Material pine
Dimensions 2937.57 × 496.28 mm
Thickness 34.00 mm



Material pine
Dimensions 1799.16 × 353.27 mm
Thickness 34.00 mm



Material pine
Dimensions 1033.14 × 354.52 mm
Thickness 34.00 mm

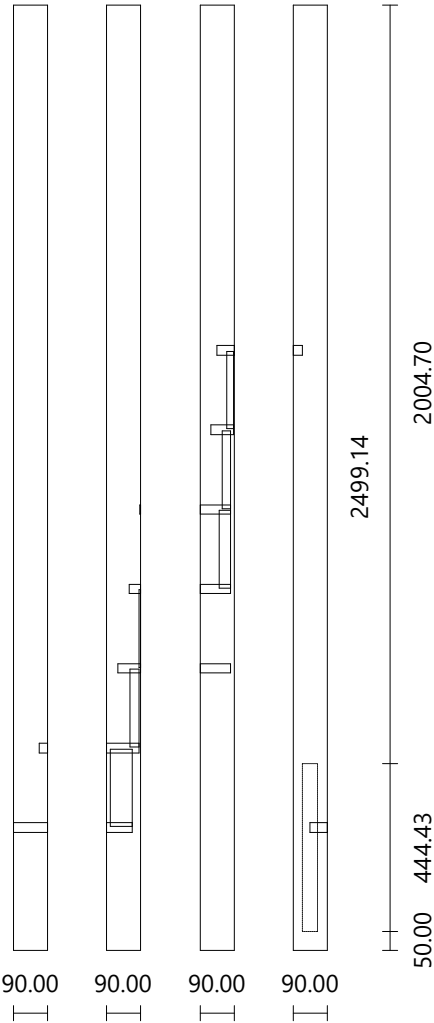
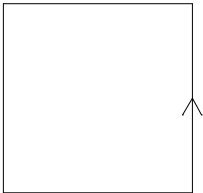


End Newel Post Left Side Flights: 1-3 Top View

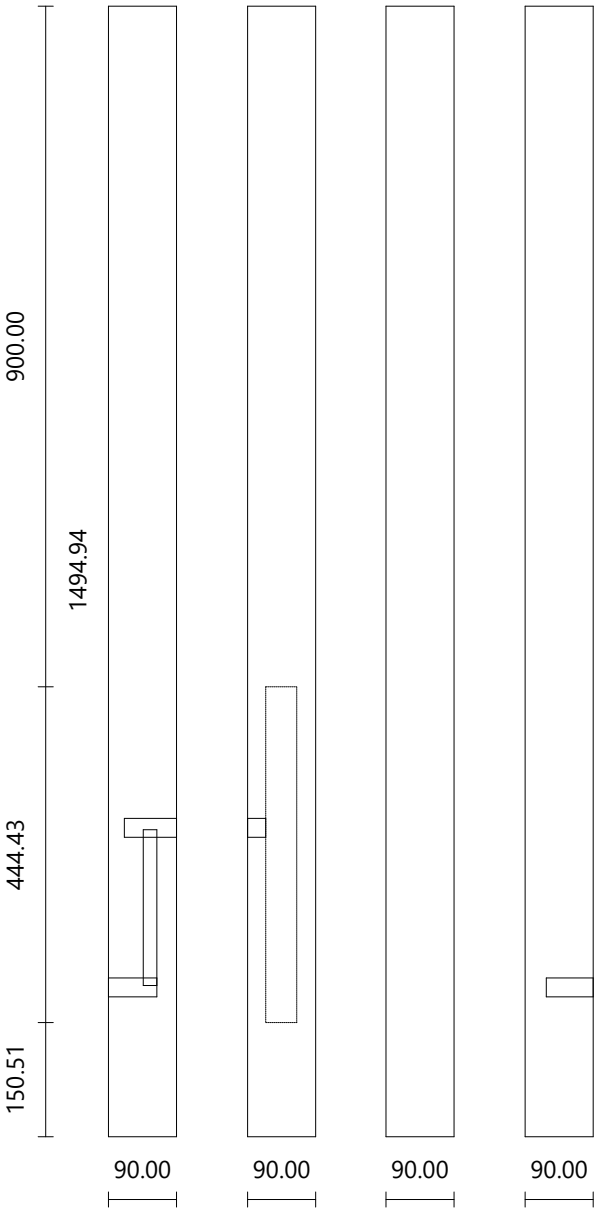
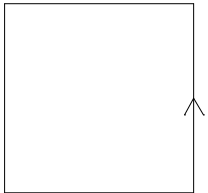
Material pine
Dimensions 90.00 × 90.00 mm
Height 2499.14 mm

Step #7 Height: 336.83 mm
Step #8 Height: 547.21 mm
Step #9 Height: 757.60 mm
Step #10 Height: 967.98 mm
Step #11 Height: 1178.37 mm
Step #12 Height: 1388.75 mm
Step #13 Height: 1599.14 mm

Face 4 Left Stringboard #1



Corner Newel Post	Left Side	Flight: 1	Top View
Material	pine		
Dimensions	90.00 × 90.00 mm		
Height	1494.94 mm		
Step #1	Height: 210.38 mm		
Step #2	Height: 420.77 mm		
Face 2	Left Stringboard #1		



Part	Material	Dimensions	Cutting List Volume	Real Volume
Step #1	MDF	781.92 × 268.55 × 25.00	5.25 dm ³	4.84 dm ³
Step #2	MDF	765.00 × 268.55 × 25.00	5.14 dm ³	5.06 dm ³
Step #3	MDF	765.00 × 268.55 × 25.00	5.14 dm ³	5.14 dm ³
Step #4	MDF	765.00 × 268.55 × 25.00	5.14 dm ³	5.14 dm ³
Step #5	MDF	765.00 × 268.55 × 25.00	5.14 dm ³	5.14 dm ³
Step #6	MDF	765.00 × 268.55 × 25.00	5.14 dm ³	5.14 dm ³
Step #7	MDF	787.00 × 397.71 × 25.00	7.82 dm ³	5.26 dm ³
Step #8	MDF	1002.74 × 559.92 × 25.00	14.04 dm ³	7.59 dm ³
Step #9	MDF	1048.59 × 471.75 × 25.00	12.37 dm ³	6.23 dm ³
Step #10	MDF	829.56 × 502.81 × 25.00	10.43 dm ³	5.55 dm ³
Step #11	MDF	1074.95 × 518.85 × 25.00	13.94 dm ³	7.88 dm ³
Step #12	MDF	938.17 × 456.44 × 25.00	10.71 dm ³	5.71 dm ³
Step #13	MDF	786.00 × 60.00 × 25.00	1.18 dm ³	1.17 dm ³
Riser #1	MDF	671.18 × 195.38 × 18.00	2.36 dm ³	2.31 dm ³
Riser #2	MDF	715.50 × 205.38 × 18.00	2.65 dm ³	2.65 dm ³
Riser #3	MDF	770.00 × 205.38 × 18.00	2.85 dm ³	2.85 dm ³
Riser #4	MDF	770.00 × 205.38 × 18.00	2.85 dm ³	2.85 dm ³
Riser #5	MDF	770.00 × 205.38 × 18.00	2.85 dm ³	2.85 dm ³
Riser #6	MDF	770.00 × 205.38 × 18.00	2.85 dm ³	2.85 dm ³
Riser #7	MDF	770.00 × 205.38 × 18.00	2.85 dm ³	2.85 dm ³
Riser #8	MDF	851.46 × 205.38 × 18.00	3.15 dm ³	3.10 dm ³
Riser #9	MDF	999.49 × 205.38 × 18.00	3.70 dm ³	3.65 dm ³
Riser #10	MDF	771.98 × 205.38 × 18.00	2.85 dm ³	2.81 dm ³
Riser #11	MDF	942.33 × 205.38 × 18.00	3.48 dm ³	3.41 dm ³
Riser #12	MDF	941.95 × 205.38 × 18.00	3.48 dm ³	3.44 dm ³
Riser #13	MDF	786.50 × 205.38 × 18.00	2.91 dm ³	2.91 dm ³
Left Stringboard #1	pine	1864.93 × 325.00 × 41.00	24.85 dm ³	21.29 dm ³
Right Stringboard #1	pine	2937.57 × 496.28 × 34.00	49.57 dm ³	30.81 dm ³
Right Stringboard #2	pine	1799.16 × 353.27 × 34.00	21.61 dm ³	18.55 dm ³
Right Stringboard #3	pine	1033.14 × 354.52 × 34.00	12.45 dm ³	10.17 dm ³
Newel Post #1	pine	90.00 × 90.00 × 2499.14	20.24 dm ³	20.24 dm ³
Newel Post #2	pine	90.00 × 90.00 × 1494.94	12.11 dm ³	12.11 dm ³

Wood Designer Ltd

Part	Material	Cutting List Volume	Real Volume	Weight	Price
Steps	MDF	101.41 dm ³	69.83 dm ³	41.90 kg	£60.85
Risers	MDF	38.81 dm ³	38.50 dm ³	23.10 kg	£23.29
Stringboards	pine	108.48 dm ³	80.82 dm ³	20.21 kg	£65.09
Newel Posts	pine	32.35 dm ³	32.35 dm ³	8.09 kg	£19.41
Total		281.05 dm³	221.50 dm³	93.30 kg	£168.64