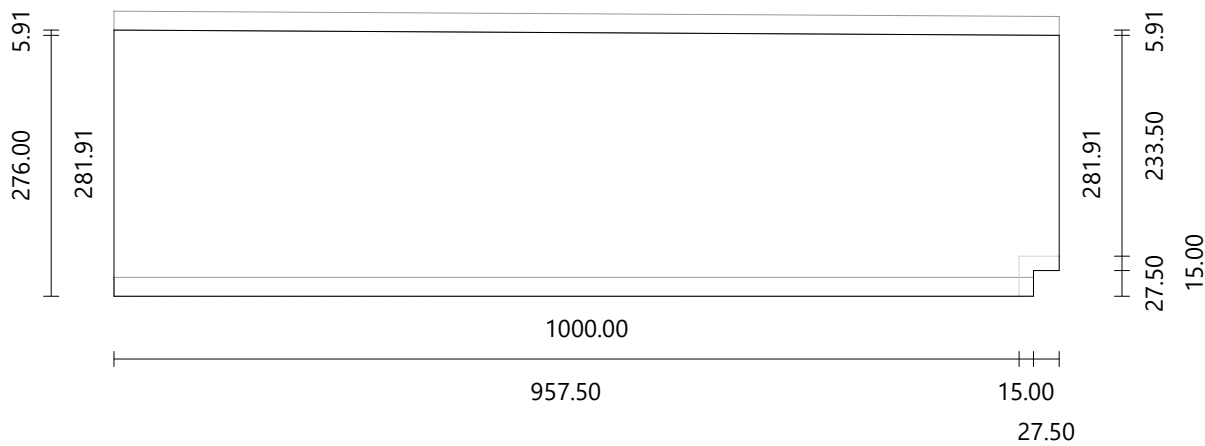


Step

Material	Default
Dimensions	1000.00 × 281.91 mm
Thickness	20.00 mm

Riser

Material	Default
Dimensions	972.50 × 176.33 mm
Thickness	20.00 mm
Angle	0°

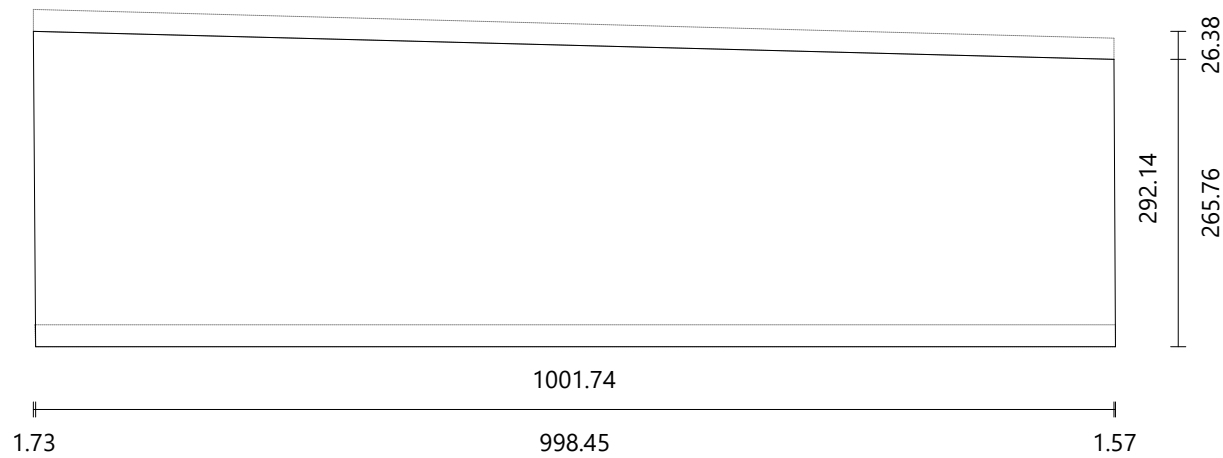


Step

Material Default
Dimensions 1001.74 × 292.14 mm
Thickness 20.00 mm

Riser

Material Default
Dimensions 1000.14 × 196.33 mm
Thickness 20.00 mm
Angle 0.34°

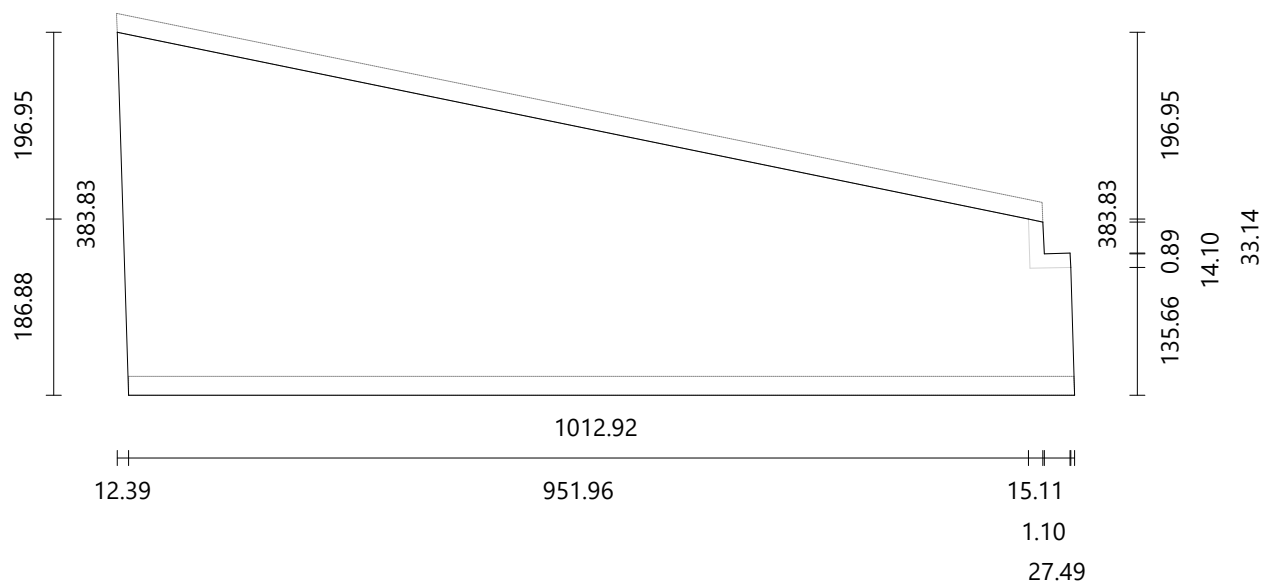


Step

Material Default
Dimensions 1012.92 × 383.83 mm
Thickness 20.00 mm

Riser

Material Default
Dimensions 1001.17 × 196.33 mm
Thickness 20.00 mm
Angle 1.85°

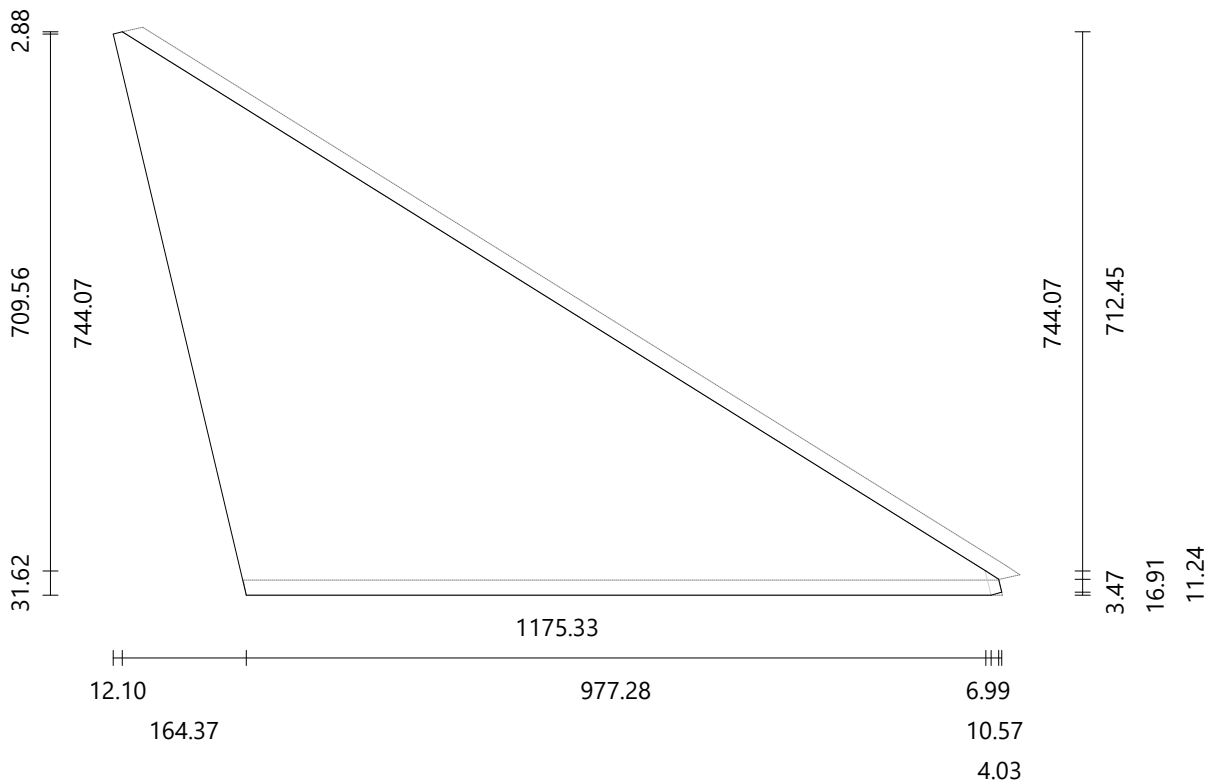


Step

Material Default
Dimensions 1175.33 × 744.07 mm
Thickness 20.00 mm

Riser

Material Default
Dimensions 1004.45 × 196.33 mm
Thickness 20.00 mm
Angle 13.39°

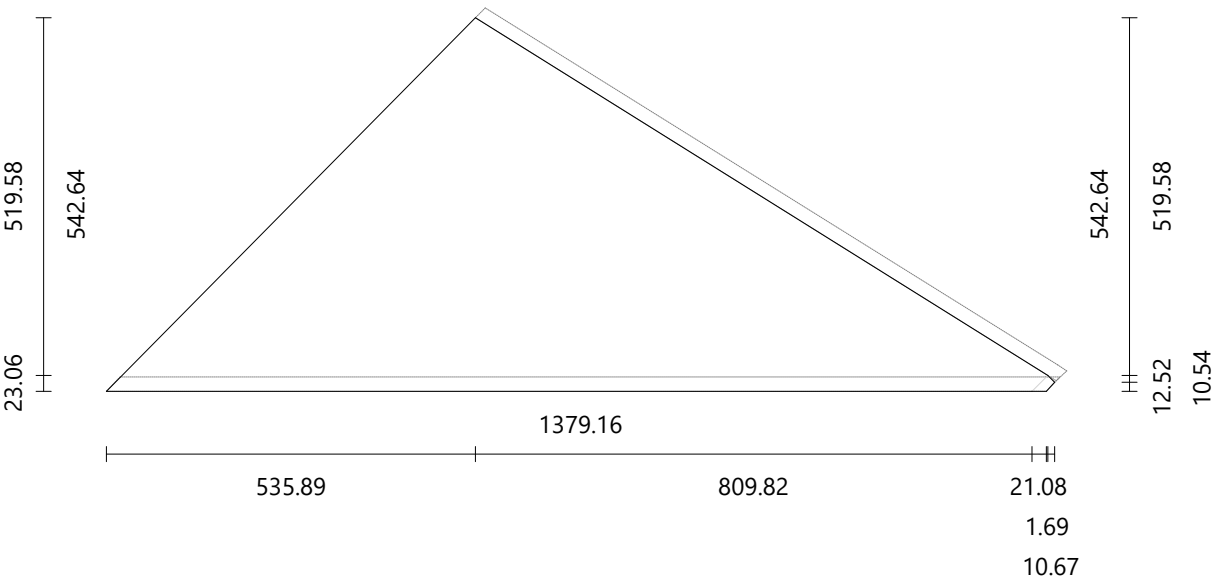


Step

Material Default
Dimensions 1379.16 × 542.64 mm
Thickness 20.00 mm

Riser

Material Default
Dimensions 1386.55 × 196.33 mm
Thickness 20.00 mm
Angle -44.64°

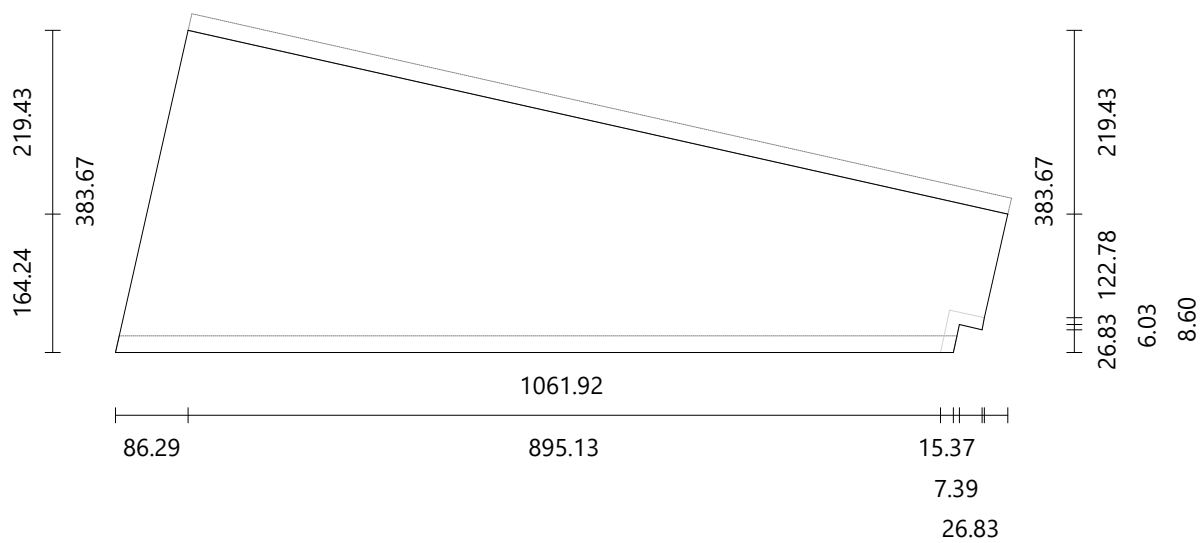


Step

Material Default
Dimensions 1061.92 × 383.67 mm
Thickness 20.00 mm

Riser

Material Default
Dimensions 1001.29 × 196.33 mm
Thickness 20.00 mm
Angle -12.68°

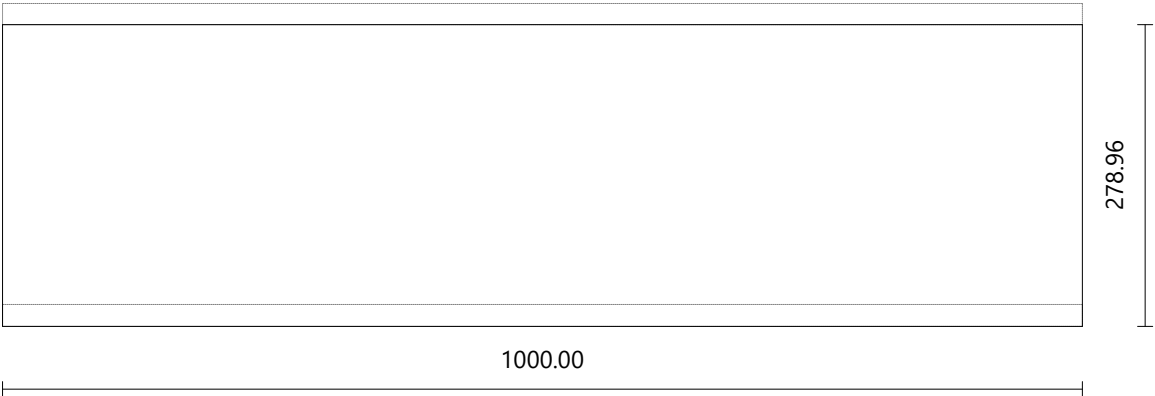


Step

Material	Default
Dimensions	1000.00 × 278.96 mm
Thickness	20.00 mm

Riser

Material	Default
Dimensions	1000.00 × 196.33 mm
Thickness	20.00 mm
Angle	0°

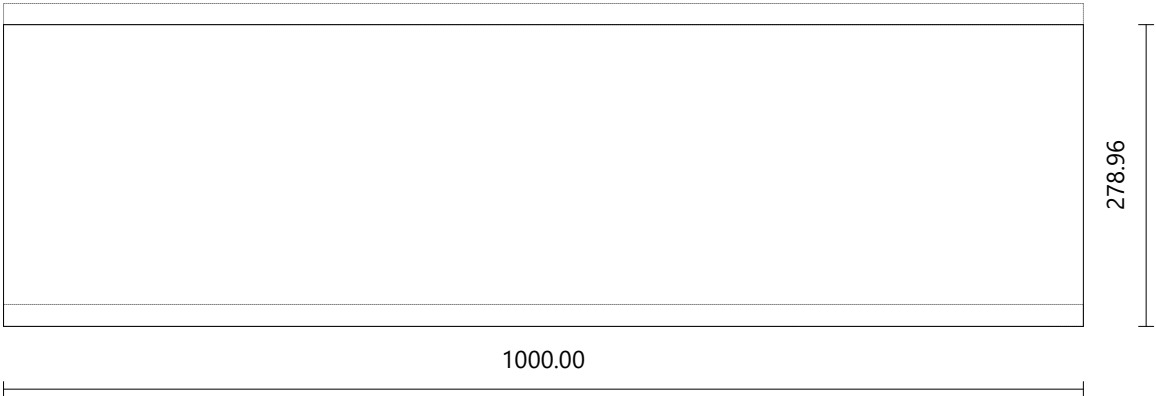


Step

Material	Default
Dimensions	1000.00 × 278.96 mm
Thickness	20.00 mm

Riser

Material	Default
Dimensions	1000.00 × 196.33 mm
Thickness	20.00 mm
Angle	0°

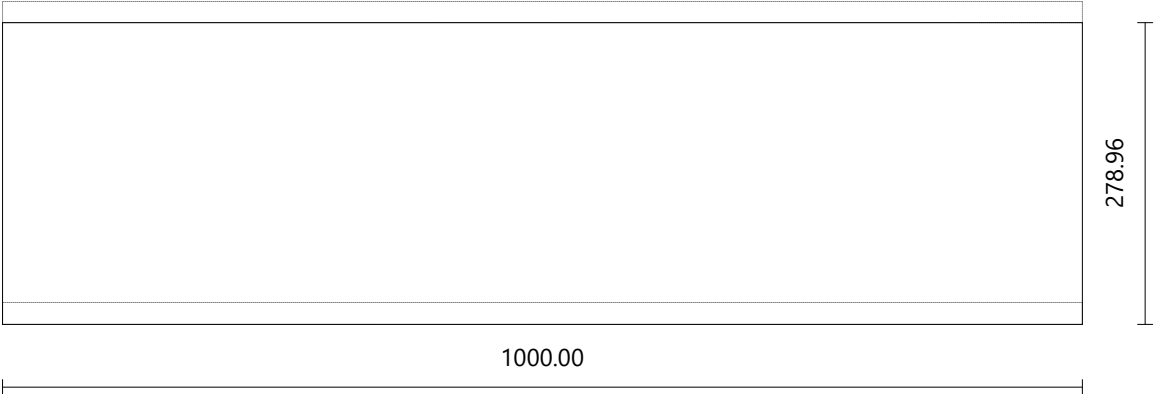


Step

Material	Default
Dimensions	1000.00 × 278.96 mm
Thickness	20.00 mm

Riser

Material	Default
Dimensions	1000.00 × 196.33 mm
Thickness	20.00 mm
Angle	0°

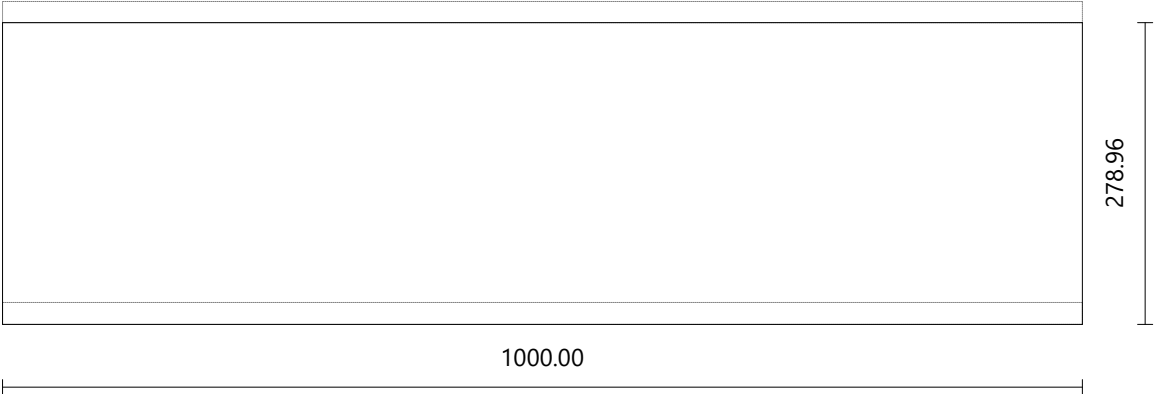


Step

Material	Default
Dimensions	1000.00 × 278.96 mm
Thickness	20.00 mm

Riser

Material	Default
Dimensions	1000.00 × 196.33 mm
Thickness	20.00 mm
Angle	0°

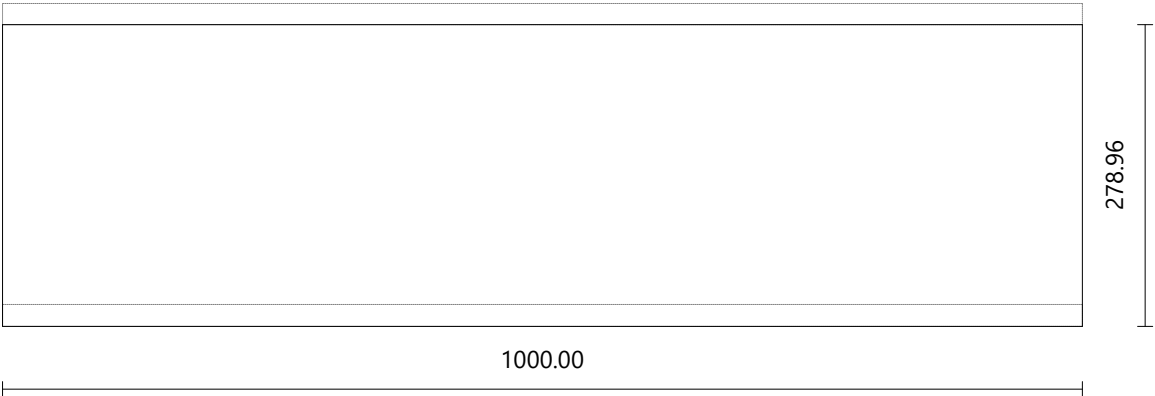


Step

Material	Default
Dimensions	1000.00 × 278.96 mm
Thickness	20.00 mm

Riser

Material	Default
Dimensions	1000.00 × 196.33 mm
Thickness	20.00 mm
Angle	0°

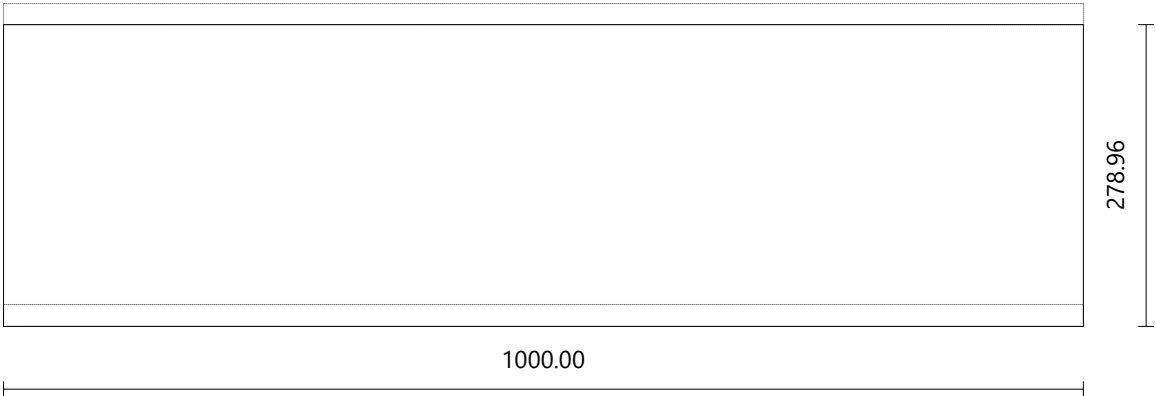


Step

Material	Default
Dimensions	1000.00 × 278.96 mm
Thickness	20.00 mm

Riser

Material	Default
Dimensions	1000.00 × 196.33 mm
Thickness	20.00 mm
Angle	0°

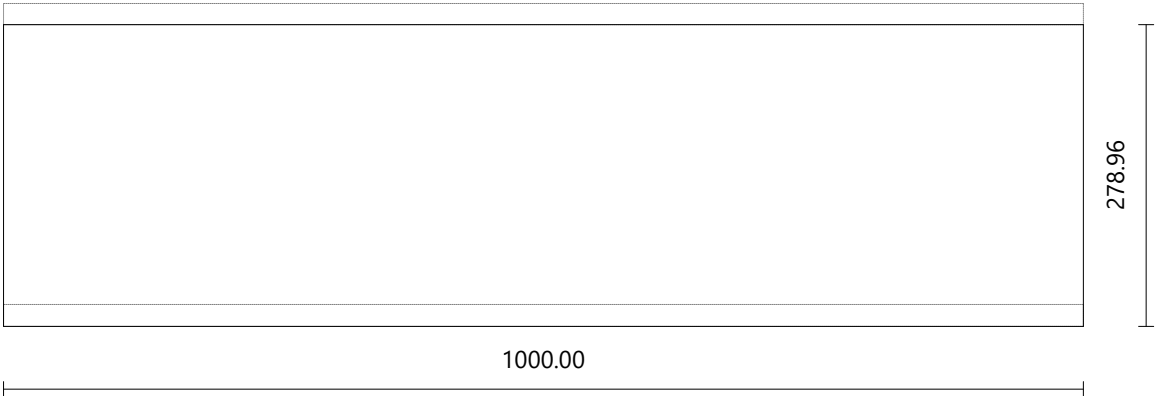


Step

Material	Default
Dimensions	1000.00 × 278.96 mm
Thickness	20.00 mm

Riser

Material	Default
Dimensions	1000.00 × 196.33 mm
Thickness	20.00 mm
Angle	0°

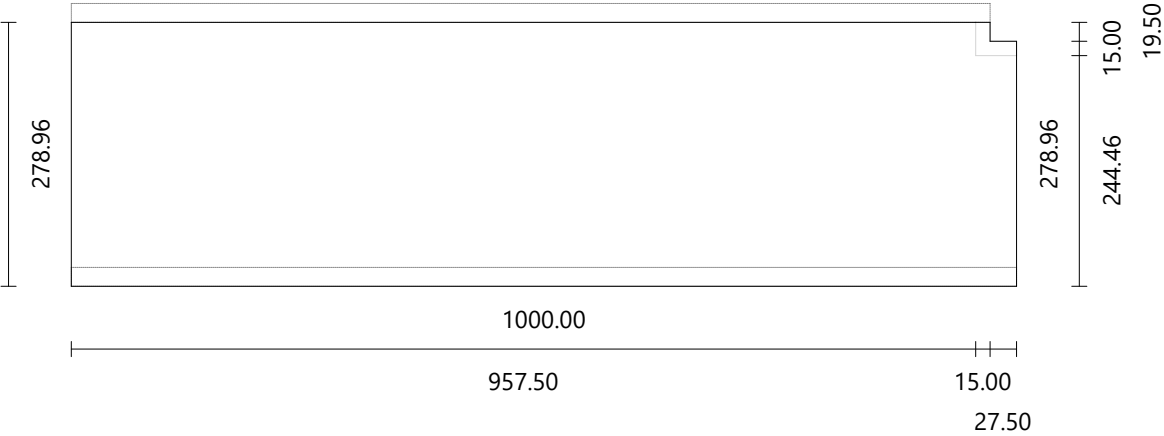


Step

Material	Default
Dimensions	1000.00 × 278.96 mm
Thickness	20.00 mm

Riser

Material	Default
Dimensions	1000.00 × 196.33 mm
Thickness	20.00 mm
Angle	0°

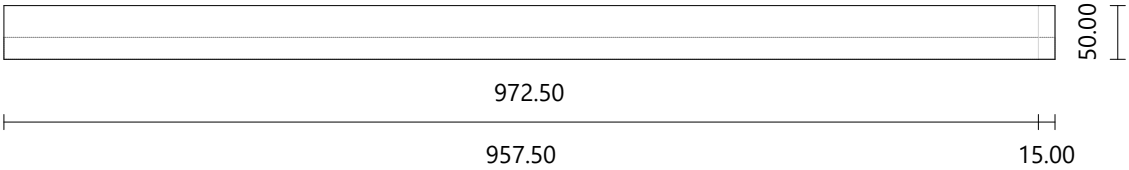


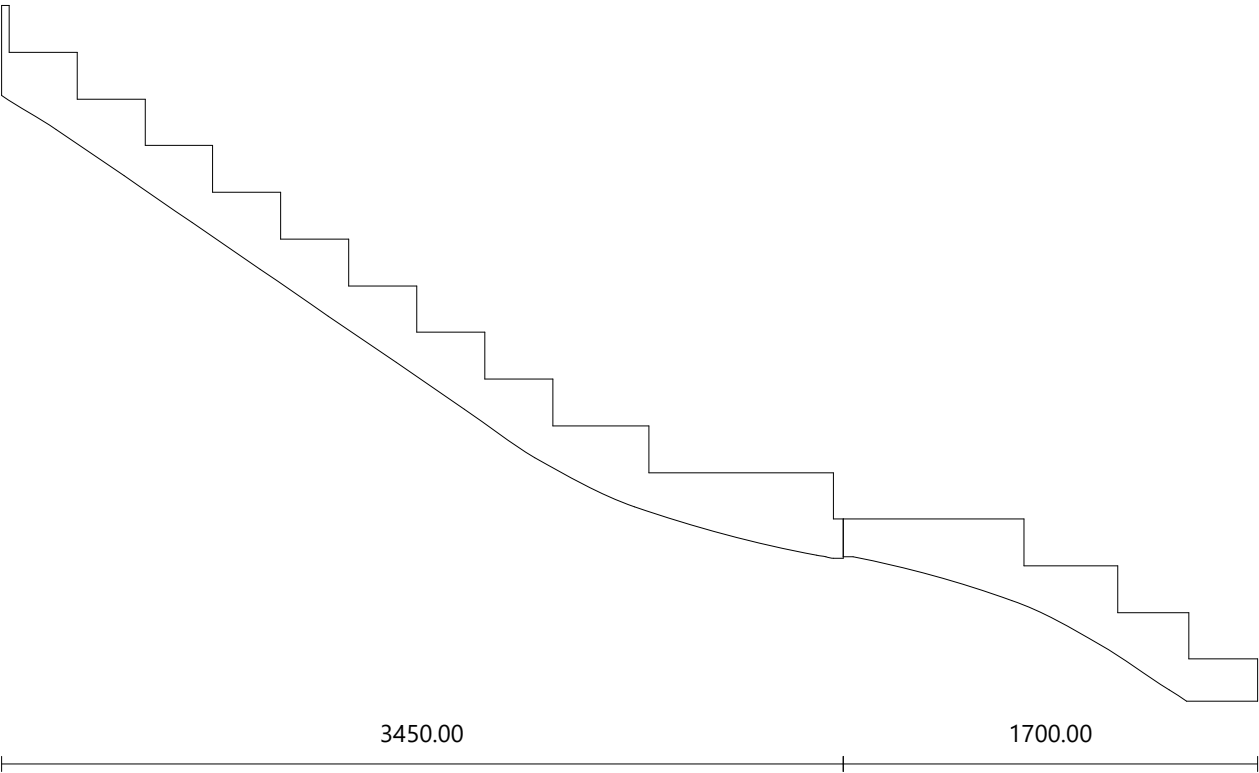
Step

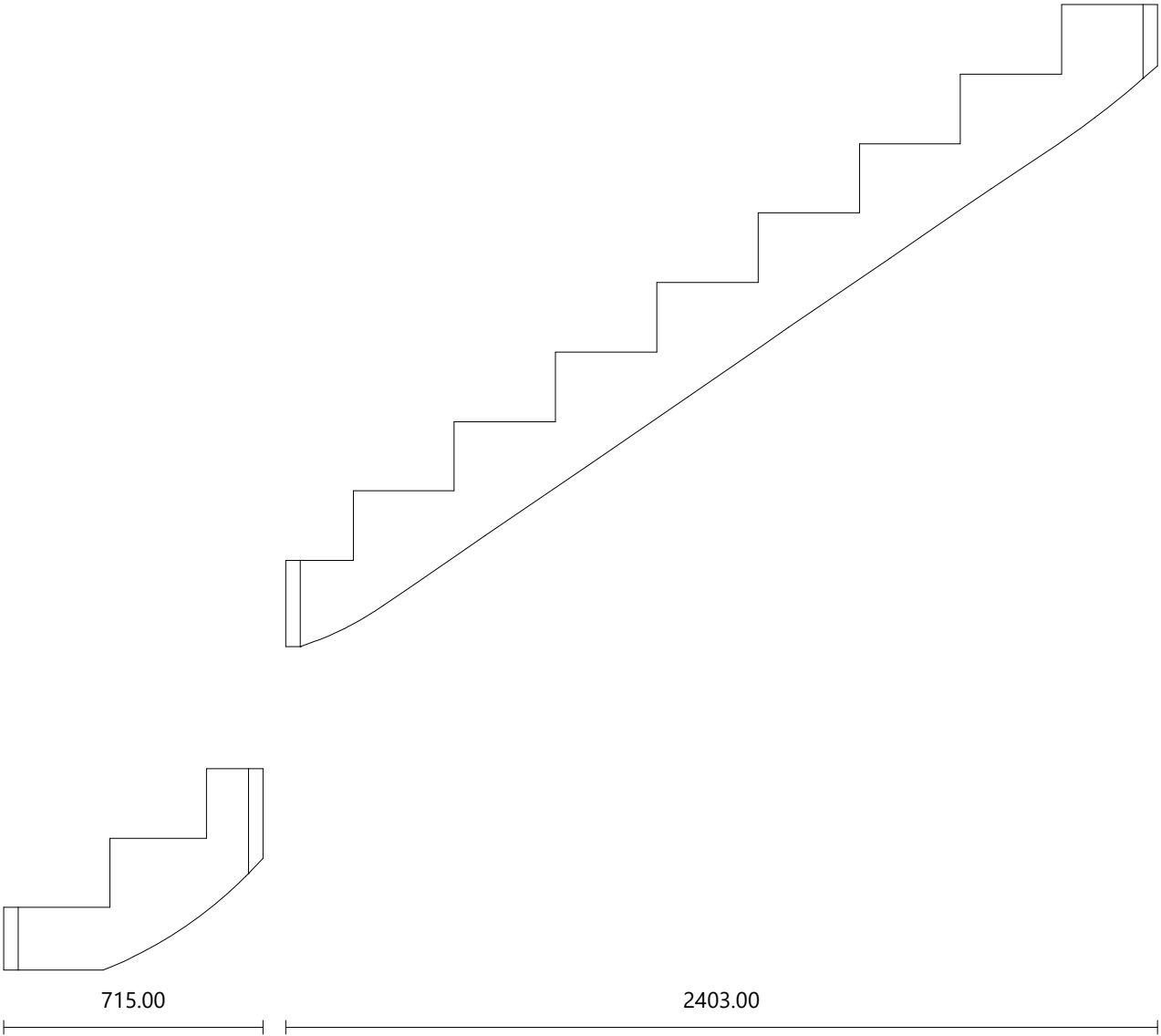
Material	Default
Dimensions	972.50 × 50.00 mm
Thickness	20.00 mm

Riser

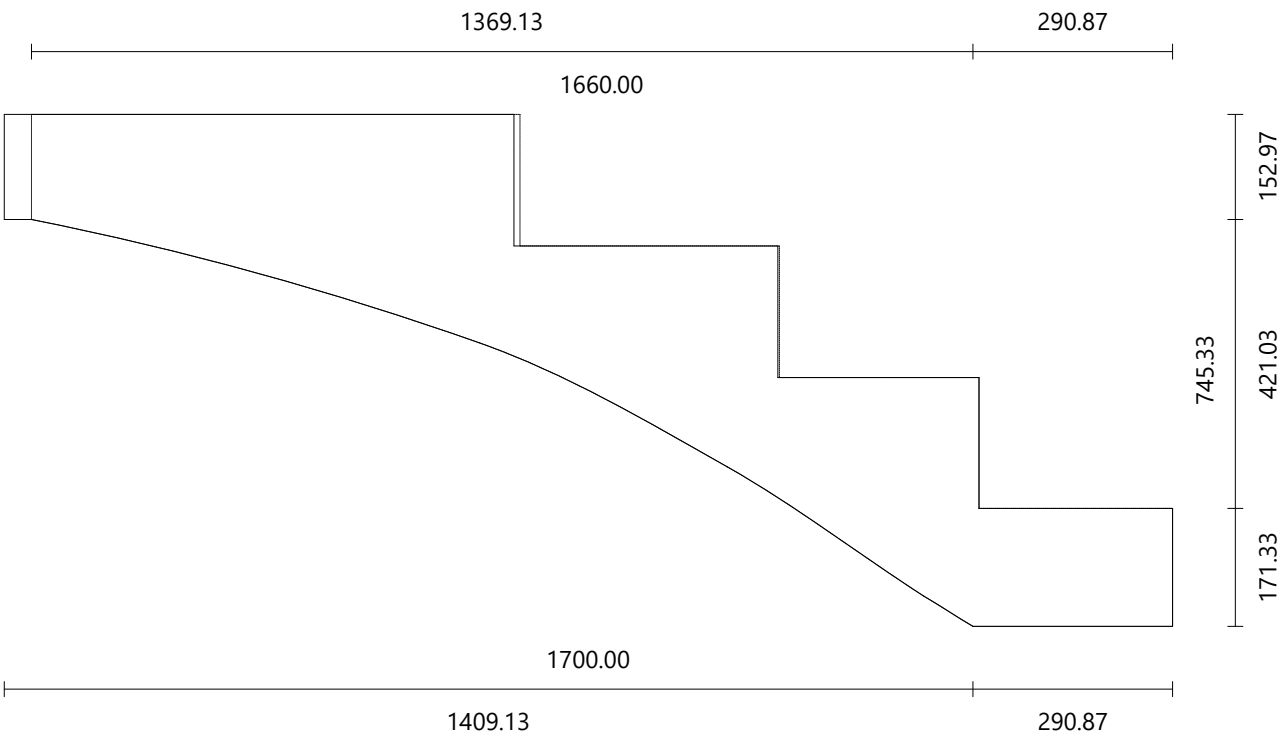
Material	Default
Dimensions	972.50 × 196.33 mm
Thickness	20.00 mm
Angle	0°



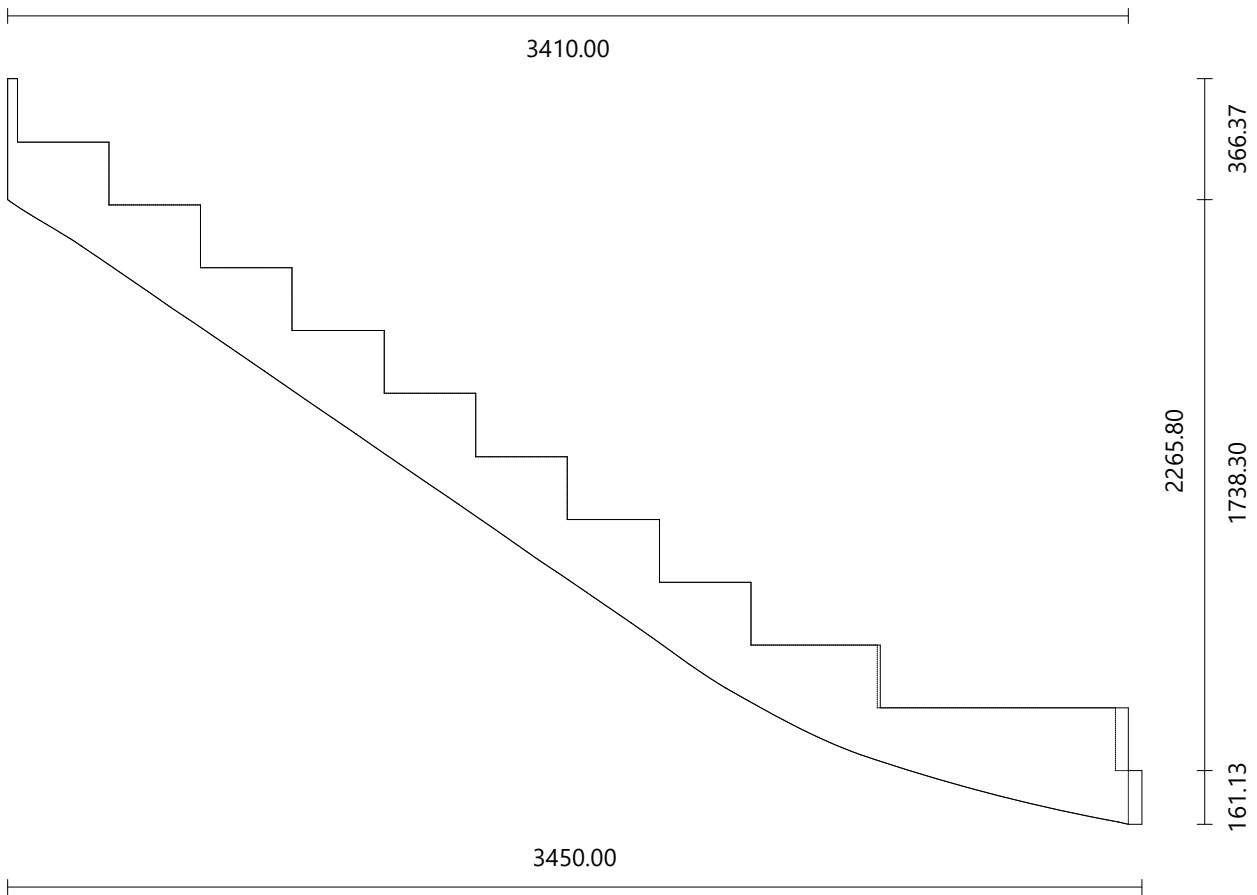




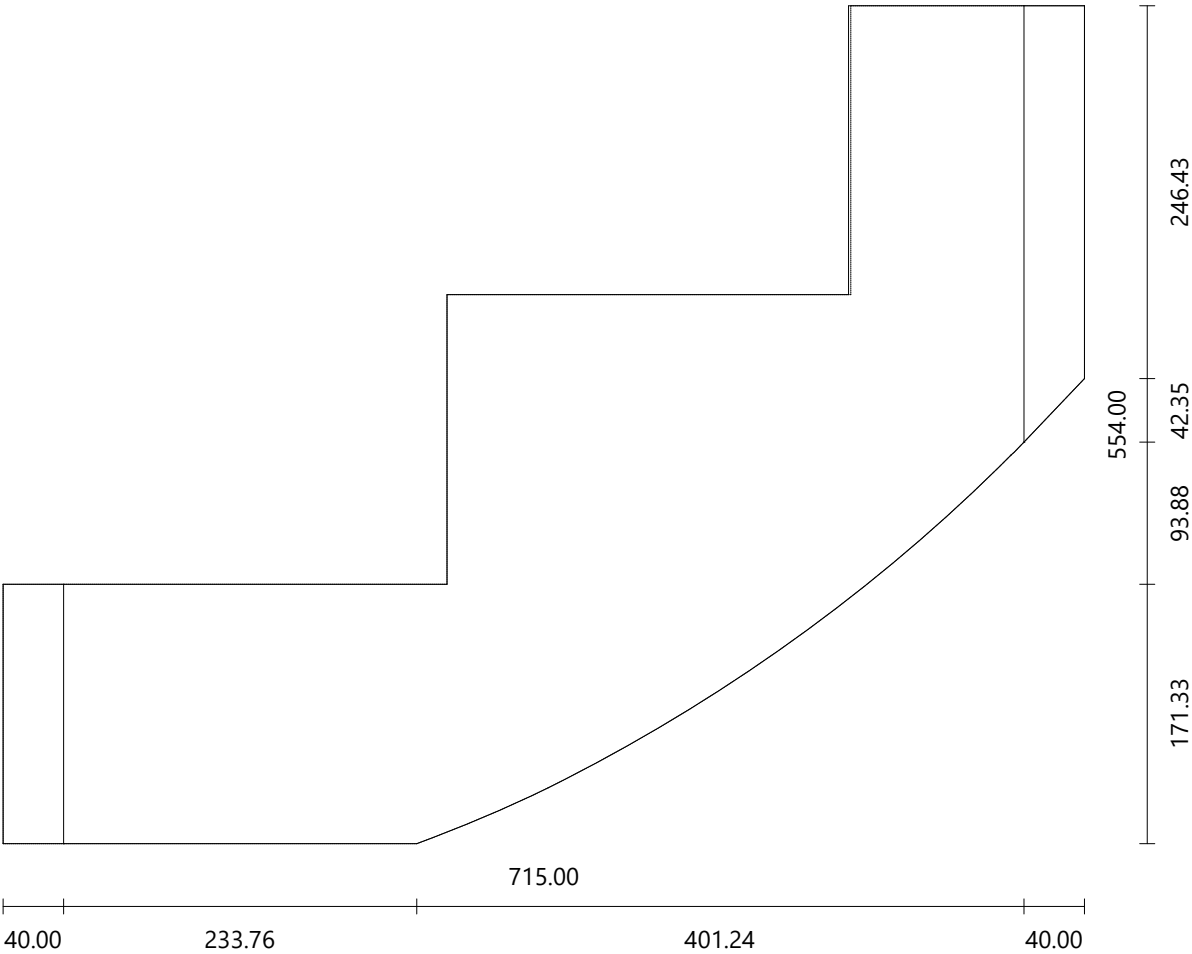
Material Default
Dimensions 1856.00 × 432.00 mm
Thickness 40.00 mm



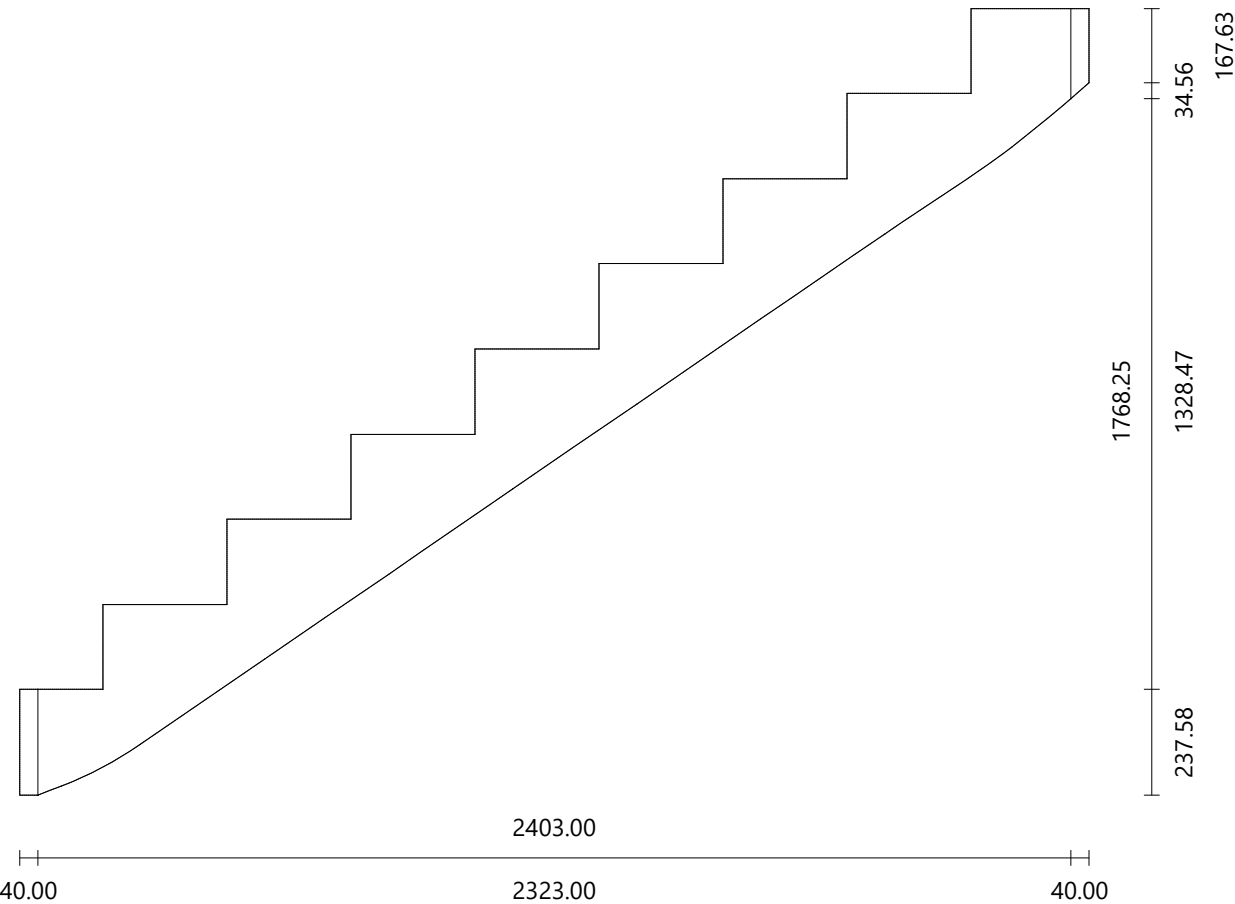
Material Default
Dimensions 4118.54 × 549.54 mm
Thickness 40.00 mm

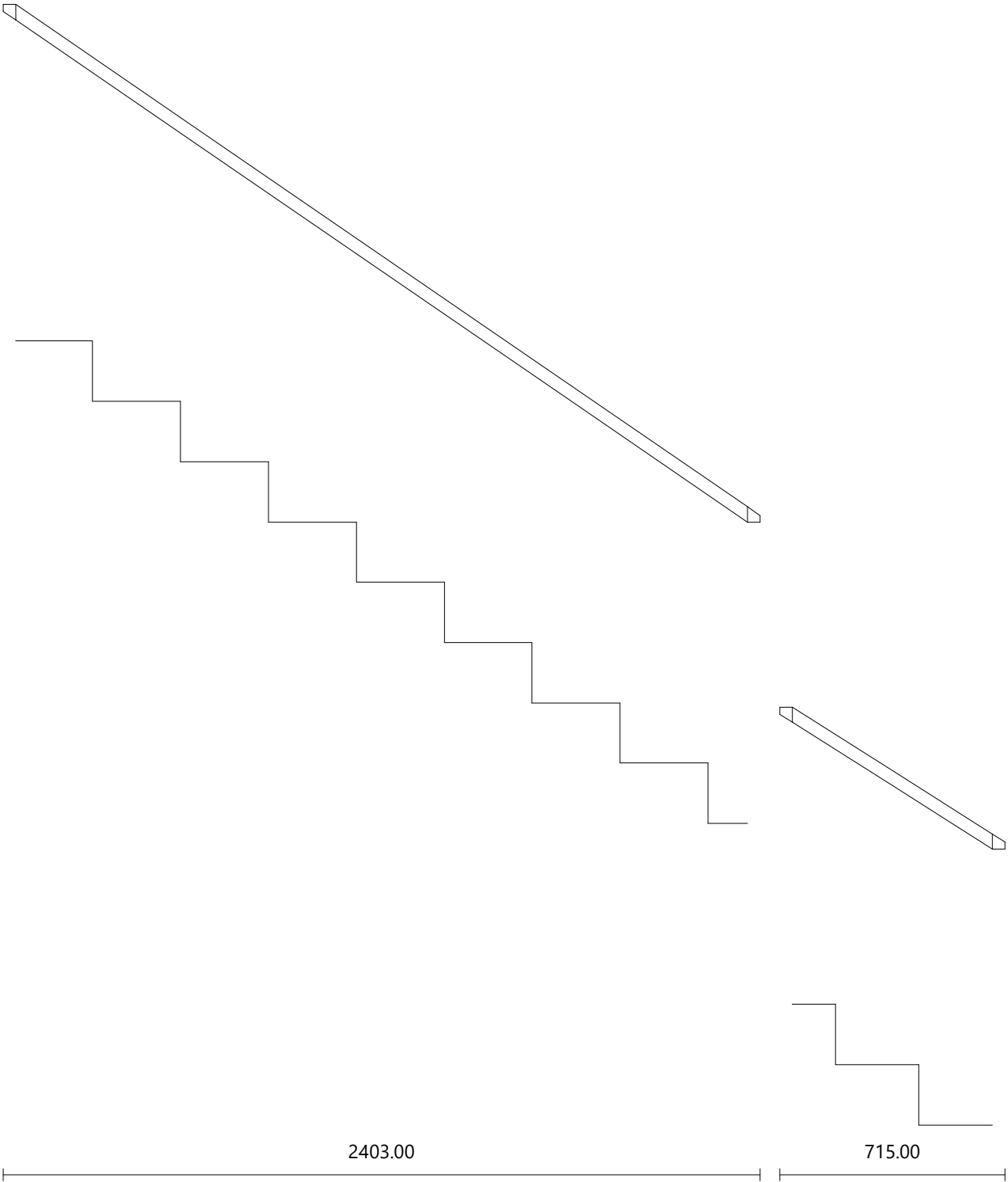


Material Default
Dimensions 902.93 × 325.78 mm
Thickness 40.00 mm

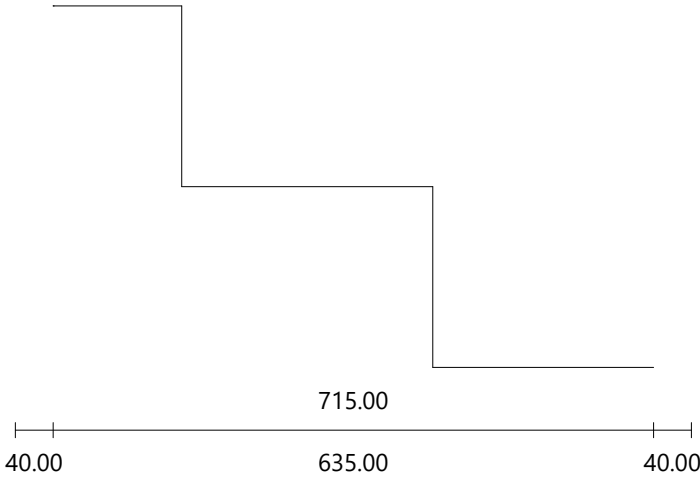
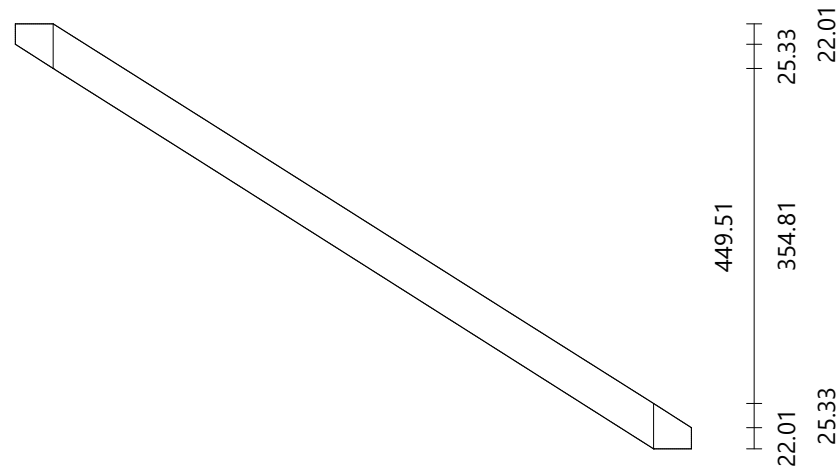


Material Default
Dimensions 2981.83 × 310.15 mm
Thickness 40.00 mm

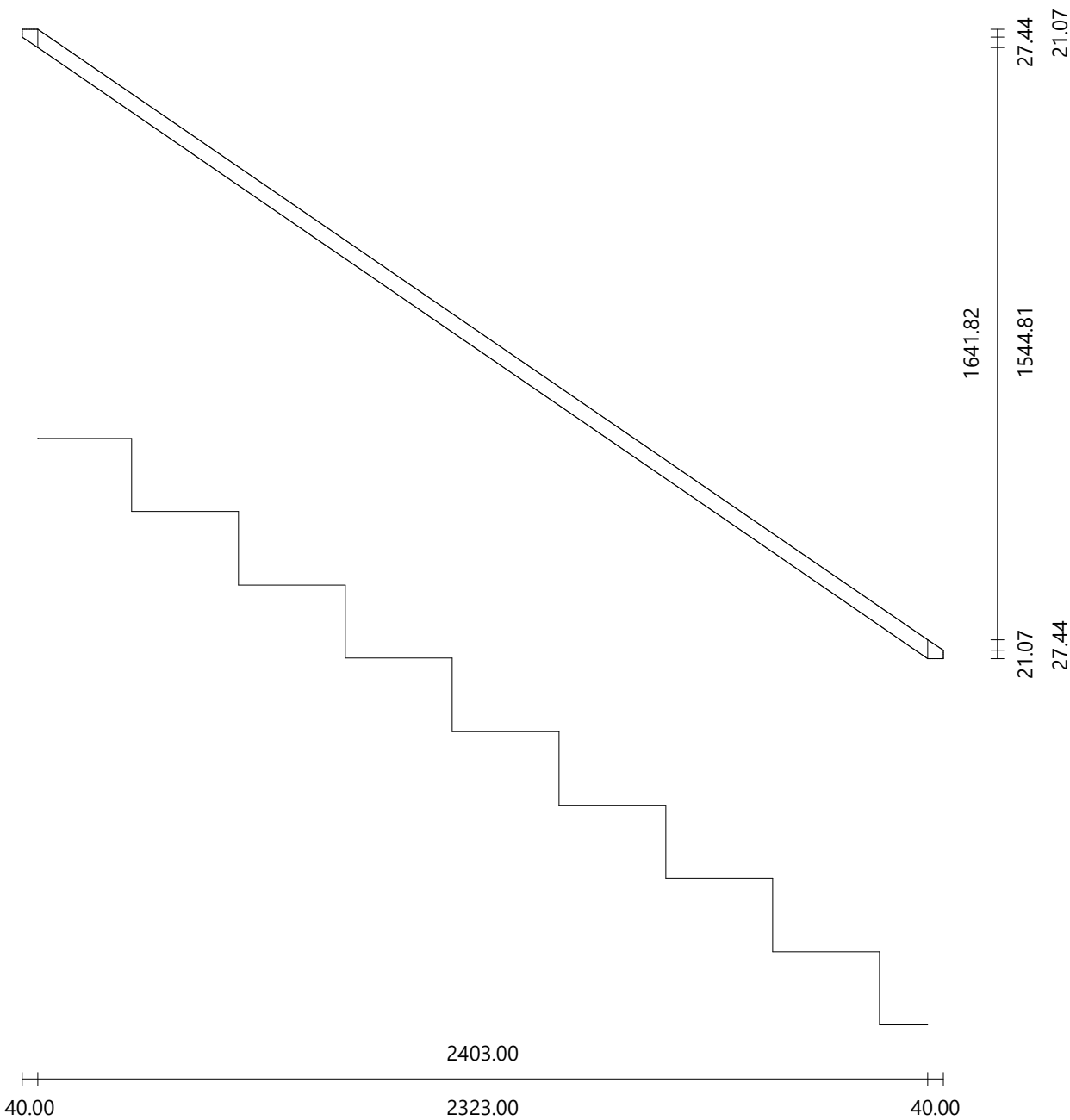




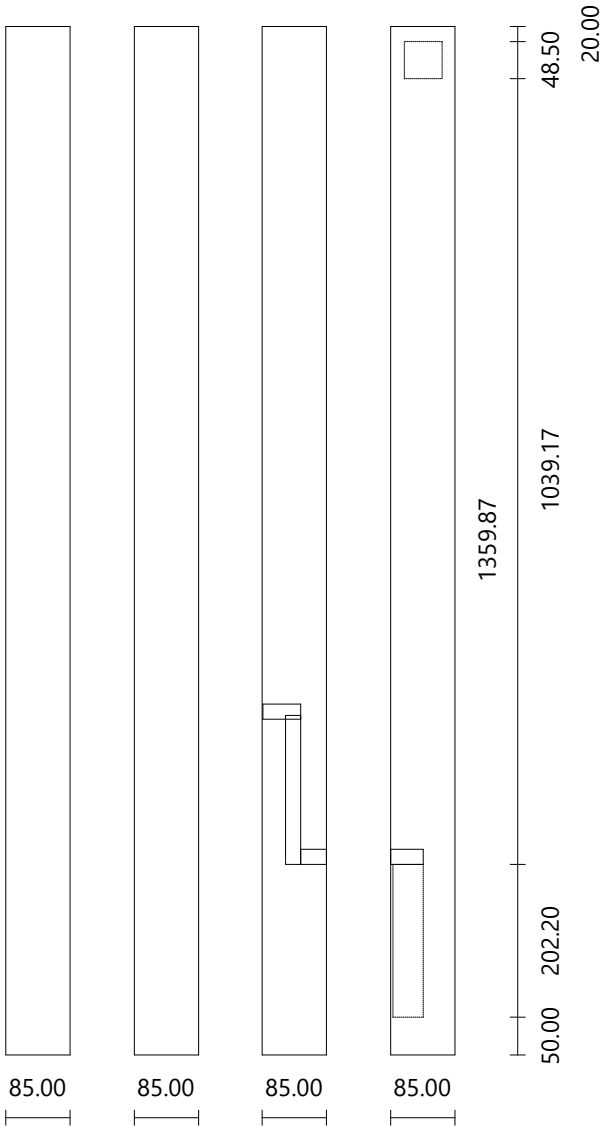
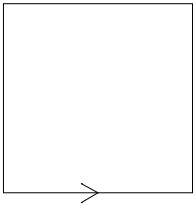
Material Default
Dimensions 844.56 × 40.00 mm
Thickness 50.00 mm



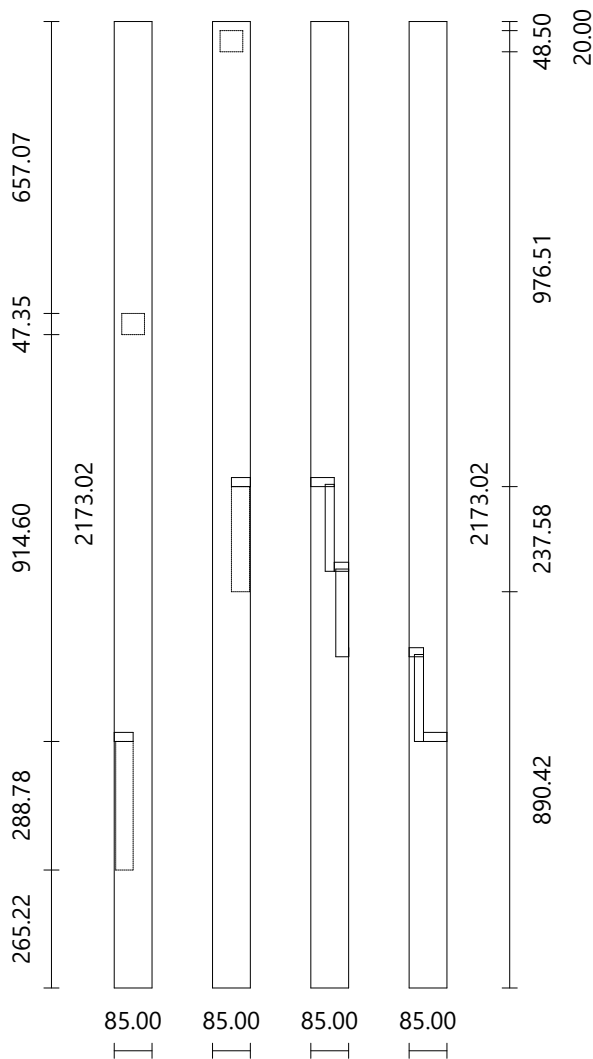
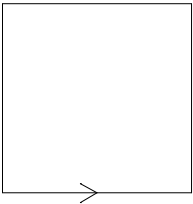
Material Default
 Dimensions 2910.32 × 40.00 mm
 Thickness 50.00 mm



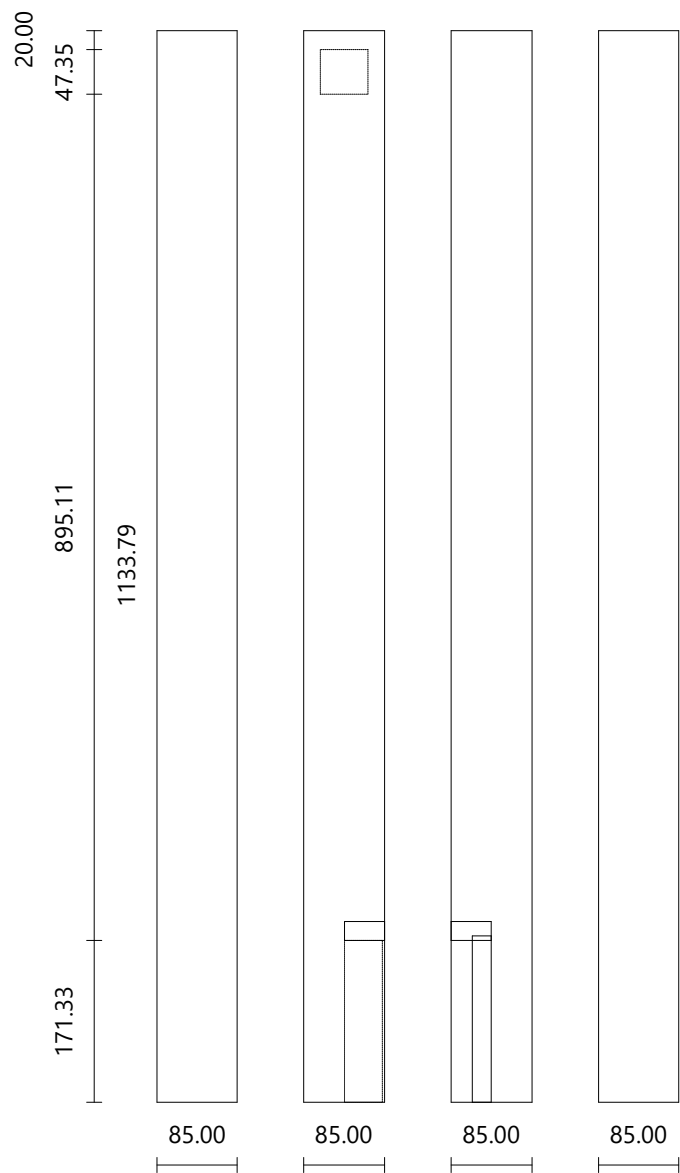
End Newel Post	Right Side	Flight: 2	Top View
Material	Default		
Dimensions	85.00 × 85.00 mm		
Height	1359.87 mm		
Step #14	Height: 272.20 mm		
Step #15	Height: 463.53 mm		
Face 4	Right Handrail #2 Right Cut String #2		



Corner Newel Post	Right Side	Flights: 1-2	Top View
Material	Default		
Dimensions	85.00 × 85.00 mm		
Height	2173.02 mm		
Step #3	Height: 574.00 mm		
Step #4	Height: 765.33 mm		
Step #5	Height: 956.67 mm		
Step #6	Height: 1148.00 mm		
Face 1	Right Handrail #1 Right Cut String #1		
Face 2	Right Handrail #2 Right Cut String #2		



End Newel Post	Right Side	Flight: 1	Top View
Material	Default		
Dimensions	85.00 × 85.00 mm		
Height	1133.79 mm		
Step #1	Height: 191.33 mm		
Face 2	Right Handrail #1 Right Cut String #1		



Part	Material	Dimensions	Cutting List Volume	Real Volume
Step #1	Default	1000.00 × 281.91 × 20.00	5.64 dm ³	5.56 dm ³
Step #2	Default	1001.74 × 292.14 × 20.00	5.85 dm ³	5.58 dm ³
Step #3	Default	1012.92 × 383.83 × 20.00	7.78 dm ³	5.61 dm ³
Step #4	Default	1175.33 × 744.07 × 20.00	17.49 dm ³	7.74 dm ³
Step #5	Default	1379.16 × 542.64 × 20.00	14.97 dm ³	7.62 dm ³
Step #6	Default	1061.92 × 383.67 × 20.00	8.15 dm ³	5.60 dm ³
Step #7	Default	1000.00 × 278.96 × 20.00	5.58 dm ³	5.58 dm ³
Step #8	Default	1000.00 × 278.96 × 20.00	5.58 dm ³	5.58 dm ³
Step #9	Default	1000.00 × 278.96 × 20.00	5.58 dm ³	5.58 dm ³
Step #10	Default	1000.00 × 278.96 × 20.00	5.58 dm ³	5.58 dm ³
Step #11	Default	1000.00 × 278.96 × 20.00	5.58 dm ³	5.58 dm ³
Step #12	Default	1000.00 × 278.96 × 20.00	5.58 dm ³	5.58 dm ³
Step #13	Default	1000.00 × 278.96 × 20.00	5.58 dm ³	5.58 dm ³
Step #14	Default	1000.00 × 278.96 × 20.00	5.58 dm ³	5.57 dm ³
Step #15	Default	972.50 × 50.00 × 20.00	0.97 dm ³	0.97 dm ³
Riser #1	Default	972.50 × 176.33 × 20.00	3.43 dm ³	3.43 dm ³
Riser #2	Default	1000.14 × 196.33 × 20.00	3.93 dm ³	3.93 dm ³
Riser #3	Default	1001.17 × 196.33 × 20.00	3.93 dm ³	3.93 dm ³
Riser #4	Default	1004.45 × 196.33 × 20.00	3.94 dm ³	3.93 dm ³
Riser #5	Default	1386.55 × 196.33 × 20.00	5.44 dm ³	5.37 dm ³
Riser #6	Default	1001.29 × 196.33 × 20.00	3.93 dm ³	3.91 dm ³
Riser #7	Default	1000.00 × 196.33 × 20.00	3.93 dm ³	3.93 dm ³
Riser #8	Default	1000.00 × 196.33 × 20.00	3.93 dm ³	3.93 dm ³
Riser #9	Default	1000.00 × 196.33 × 20.00	3.93 dm ³	3.93 dm ³
Riser #10	Default	1000.00 × 196.33 × 20.00	3.93 dm ³	3.93 dm ³
Riser #11	Default	1000.00 × 196.33 × 20.00	3.93 dm ³	3.93 dm ³
Riser #12	Default	1000.00 × 196.33 × 20.00	3.93 dm ³	3.93 dm ³
Riser #13	Default	1000.00 × 196.33 × 20.00	3.93 dm ³	3.93 dm ³
Riser #14	Default	1000.00 × 196.33 × 20.00	3.93 dm ³	3.93 dm ³
Riser #15	Default	972.50 × 196.33 × 20.00	3.82 dm ³	3.82 dm ³
Left Cut String #1	Default	1856.00 × 432.00 × 40.00	32.07 dm ³	16.07 dm ³
Left Cut String #2	Default	4118.54 × 549.54 × 40.00	90.53 dm ³	37.55 dm ³
Right Cut String #1	Default	902.93 × 325.78 × 40.00	11.77 dm ³	7.06 dm ³
Right Cut String #2	Default	2981.83 × 310.15 × 40.00	36.99 dm ³	26.20 dm ³
Right Handrail #1	Default	844.56 × 40.00 × 50.00	1.69 dm ³	1.64 dm ³
Right Handrail #2	Default	2910.32 × 40.00 × 50.00	5.82 dm ³	5.77 dm ³
Newel Post #1	Default	85.00 × 85.00 × 1359.87	9.83 dm ³	9.83 dm ³
Newel Post #2	Default	85.00 × 85.00 × 2173.02	15.70 dm ³	15.70 dm ³
Newel Post #3	Default	85.00 × 85.00 × 1133.79	8.19 dm ³	8.19 dm ³

Part	Material	Cutting List Volume	Real Volume	Weight	Price
Steps	Default	105.48 dm ³	83.30 dm ³		
Risers	Default	59.84 dm ³	59.72 dm ³		
Lateral Cut Strings	Default	171.36 dm ³	86.88 dm ³		
Handrails	Default	7.51 dm ³	7.41 dm ³		
Newel Posts	Default	33.72 dm ³	33.72 dm ³		
Total		377.91 dm³	271.03 dm³		